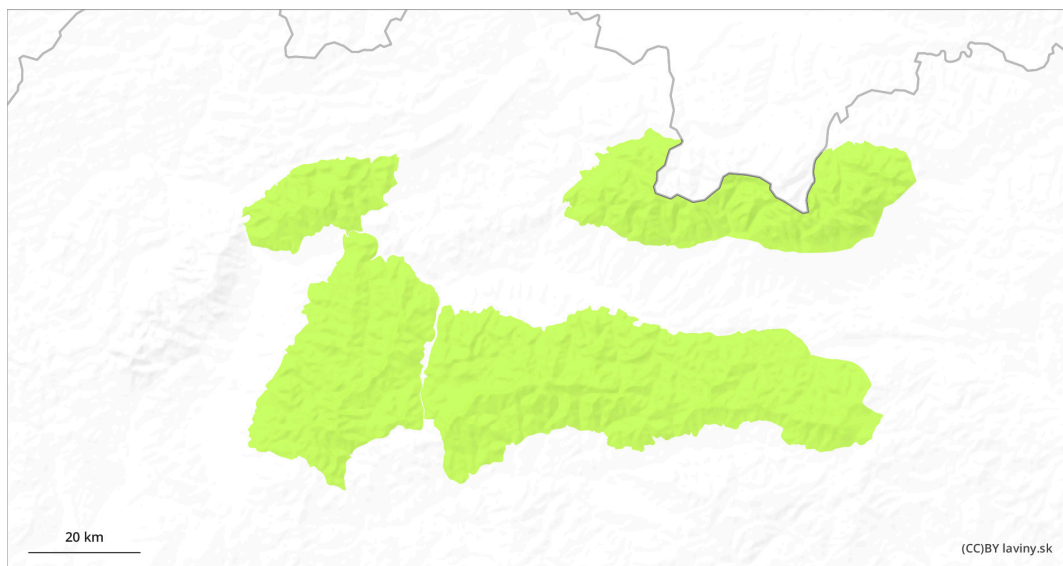
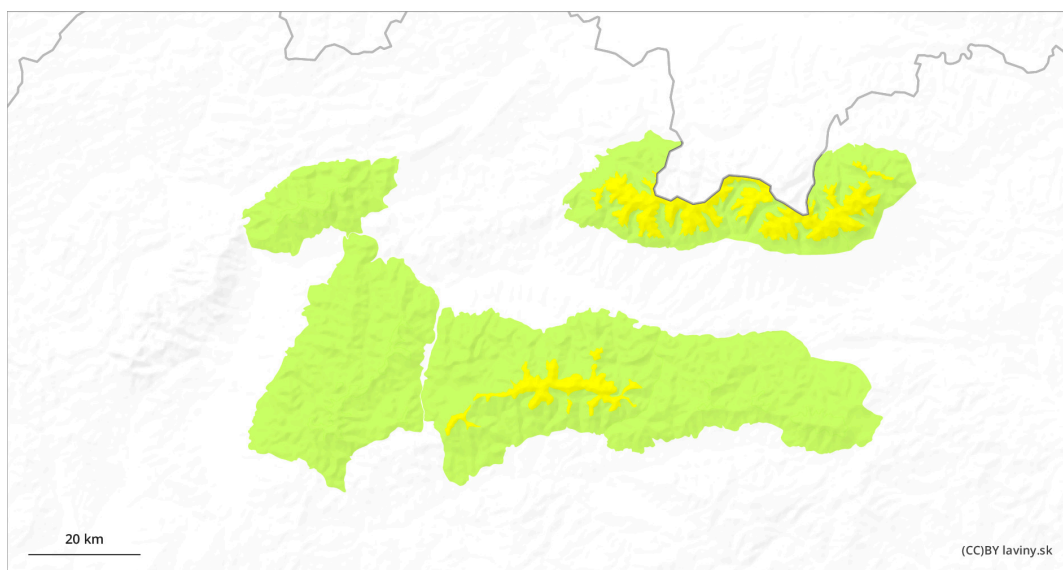


AM

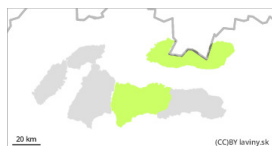


PM



Danger Level 2 - Moderate

AM:



Tendency: Decreasing avalanche danger
on Monday 20 04 2026



Wet snow

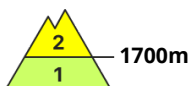
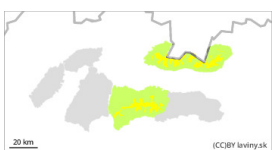


Snowpack stability: fair

Frequency: few

Avalanche size: small

PM:



1700m

Tendency: Decreasing avalanche danger
on Monday 20 04 2026



Wet snow



1700m

Snowpack stability: poor

Frequency: some

Avalanche size: medium

Beware of wet snow on steep slopes!

In the High, Western and Low Tatras there is a MODERATE avalanche danger, which means the 2nd degree. On steep slopes it is possible to release an avalanche from wet snow, especially with higher additional loads. In exposed terrain, the occurrence of small to medium-sized spontaneous avalanches from wet snow is also possible.

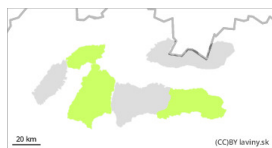
Snowpack

The snow cover is frozen in the morning, during the day in sunny weather it changes to wet, often in the whole profile. Air temperature reaches positive (+) values in all altitudes of the Tatras. Continuous snow cover occurs only at high altitudes, on the northern slopes and in the middle altitudes from about 1400 to 1700 m above sea level. Its height reaches 50 to 150 cm, the most snow at a comparable height is in the Low Tatras.

Tendency

decreasing as it cools down during Monday

Danger Level 1 - Low



Tendency: Decreasing avalanche danger
on Monday 20 04 2026



Wet snow



Treeline

Snowpack stability: poor

Frequency: few

Avalanche size: small

Generally favourable situation. Snow only in the northern sector.

In the Fatras and in the eastern part of the Low Tatras there is only a SMALL avalanche danger, level 1. Avalanche release from wet snow is possible only in isolated cases on very steep slopes where there is still continuous snow cover (northern sector)

Snowpack

The snow cover in these mountains is already discontinuous on most of the slopes, it is more continuous only in the northern and eastern orientations above the forest zone. Its height reaches a maximum of 50 cm. In cloudy weather, wet snow prevails throughout the day.

Tendency

with disappearing snow cover and a decreasing tendency when it gets colder