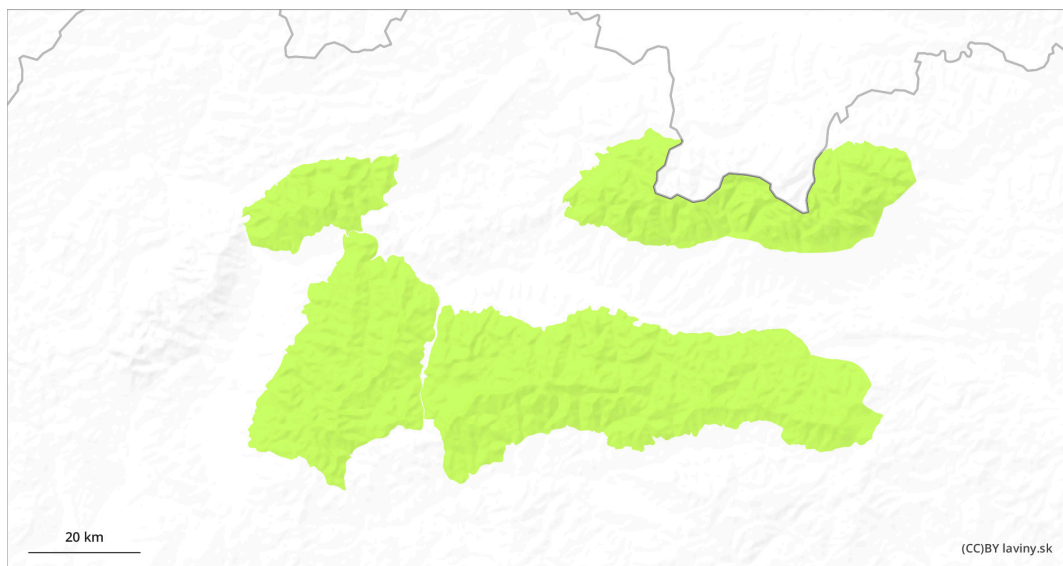
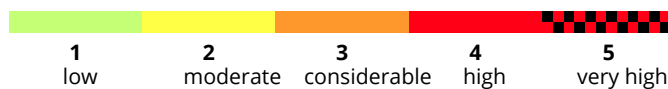
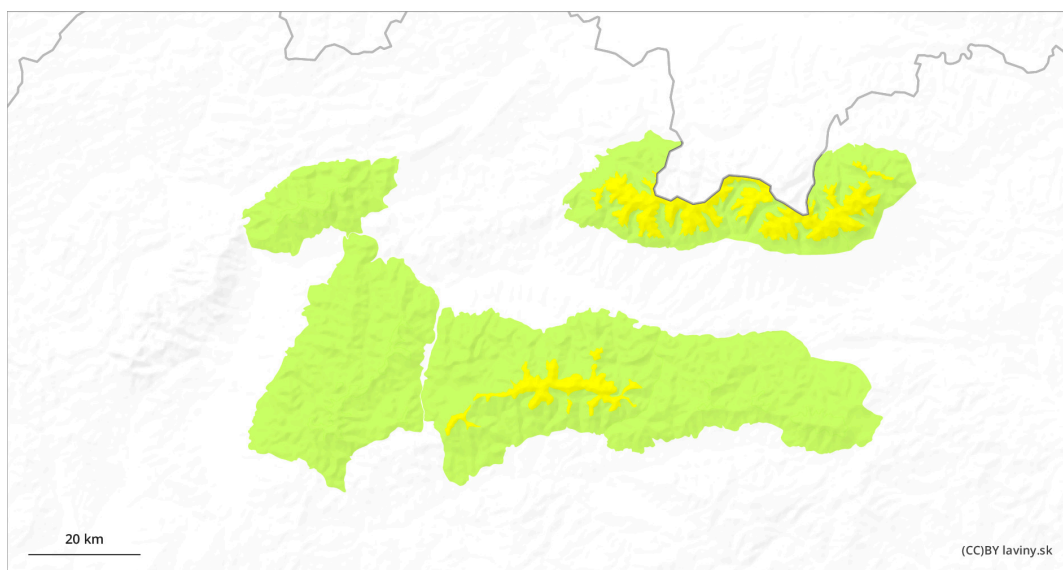


AM

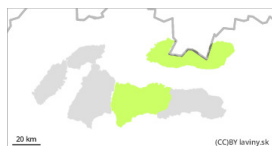


PM



Danger Level 2 - Moderate

AM:



Tendency: Constant avalanche danger →
on Thursday 16 04 2026



Wet snow

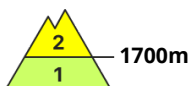
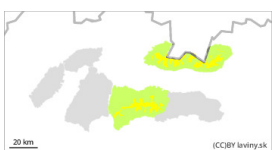


Snowpack stability: fair

Frequency: few

Avalanche size: small

PM:



1700m

Tendency: Constant avalanche danger →
on Thursday 16 04 2026



Wet snow



1700m

Snowpack stability: poor

Frequency: few

Avalanche size: medium

Beware of wet snow on steep slopes!

In the High, Western and Low Tatras there is a SMALL avalanche danger in the morning, which changes to MODERATE, which means 2nd degree, when it gets warmer during the day. On steep slopes it is possible to release an avalanche from wet snow, especially with higher additional loads. Occasional smaller spontaneous avalanches from wet snow are possible in exposed terrain.

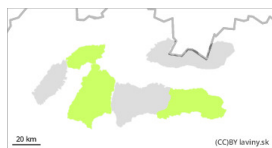
Snowpack

The snow cover is mostly wet due to the warming and typical spring weather, only slightly frozen in the morning. The air temperature reaches positive (+) values in all altitudes of the Tatras. Continuous snow cover occurs only at high altitudes, on the northern slopes and in the middle altitudes from about 1300 to 1600 m above sea level. Its height reaches 50 to 150 cm, the most snow at a comparable height is in the Low Tatras.

Tendency

persistent situation

Danger Level 1 - Low



Tendency: Constant avalanche danger →
on Thursday 16 04 2026



Wet snow



Snowpack stability: **poor**

Frequency: **few**

Avalanche size: **small**

Generally favourable situation

In the Fatras and in the eastern part of the Low Tatras there is only a **SMALL** avalanche danger, level 1. Avalanche release from wet snow is possible only in isolated cases on very steep slopes where there is still a continuous snow cover.

Snowpack

The snow cover in these mountains is already discontinuous on most of the slopes, it is more continuous only in the northern and eastern orientations above the forest zone. Its height reaches a maximum of 50 cm. In cloudy weather, wet snow prevails throughout the day.

Tendency

persistent situation