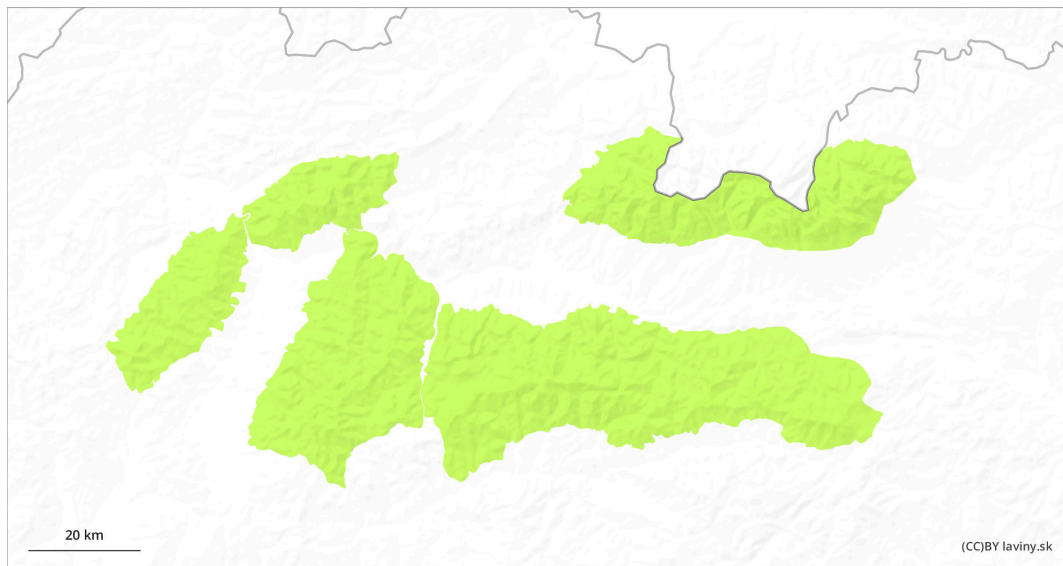
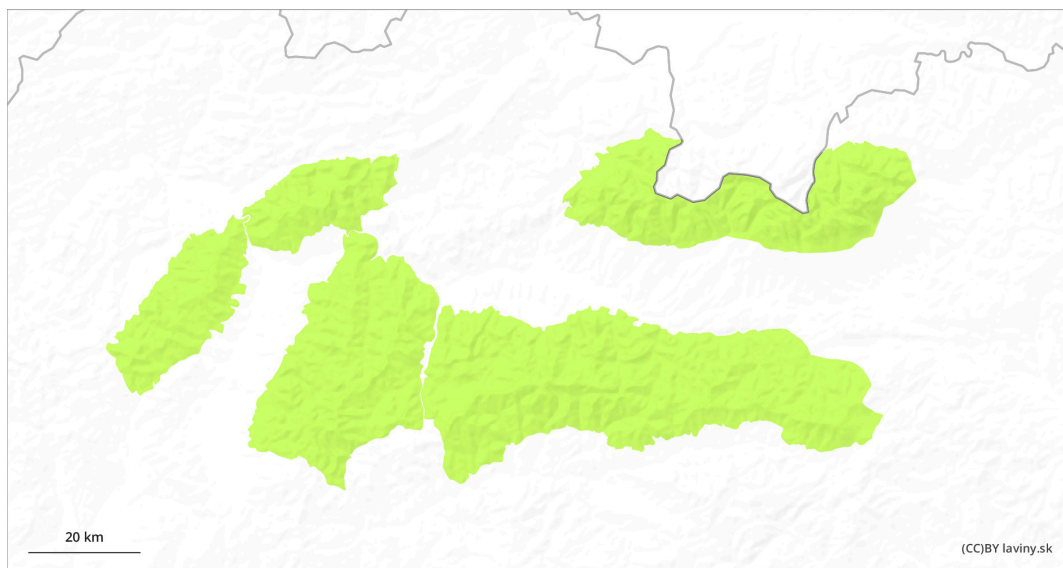


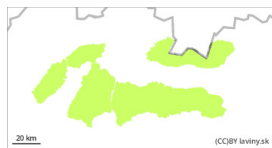

# AM

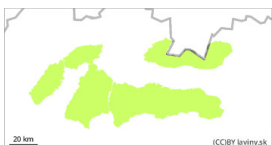


# PM



## Danger Level 1 - Low

**AM:**

**Tendency: Increasing avalanche danger**   
 on Sunday 26 01 2025

**PM:**

**Tendency: Increasing avalanche danger**   
 on Sunday 26 01 2025


Wet snow



Treeline

Snowpack stability: poor

Frequency: few

Avalanche size: small

## Beware of avalanches from wet snow on sunlit slopes

Snow cover is well stabilized in most places in the morning. Snow will soften and lose stability as the day warms up. Avalanches and drifts of wet snow may occur on sunlit slopes and will be particularly dangerous on steep, exposed terrain. There is a risk of falling when hit by even a small avalanche or avalanche slide. Inflated snow pillows may occur sporadically at the highest altitudes of the High and Western Tatras, especially on shaded, steep to extremely steep slopes and couloirs. Their size and extent are small, with possible loosening under high additional loads.

## Snowpack

The snow is mostly well packed due to the change in temperature, but will lose cohesion as the day warms up. By early morning and early afternoon, the snowpack will still be hard packed in spots and icy, with crusting as appropriate. In the afternoon, on sunlit slopes, the snow will become saturated with water and scattered. Dry snow is only an occasional occurrence, especially on shaded steep high slopes and couloirs. Snow depths remain well below average for this time of year.

## Tendency

During the day increasing