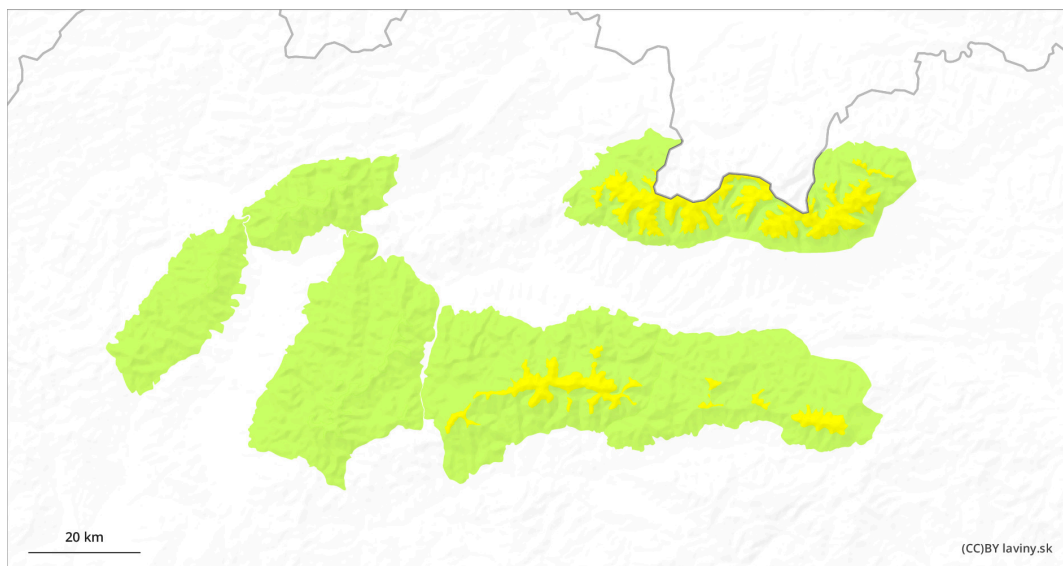
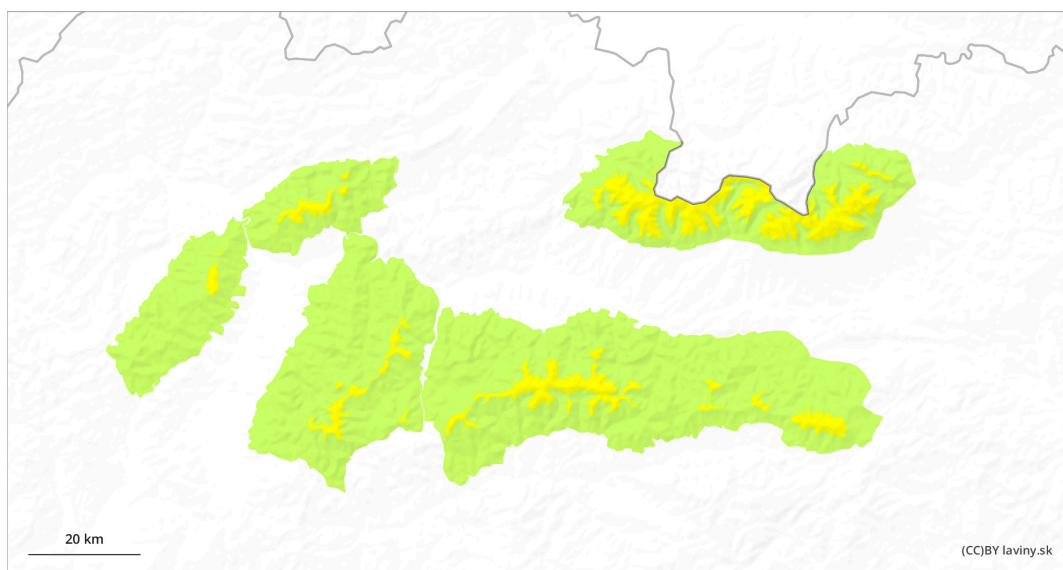


AM



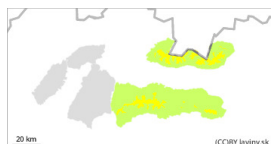
PM



Danger Level 2 - Moderate



Tendency: Increasing avalanche danger
on Tuesday 21 01 2025



Wet snow



Treeline

Snowpack stability: **poor**

Frequency: **some**

Avalanche size: **medium**



Wind slab



1800m

Snowpack stability: **fair**

Frequency: **few**

Avalanche size: **medium**

Beware of wet avalanches on steep, sunlit slopes!

Due to the strong warming and solar radiation there is a moderate avalanche danger in the High and Western Tatras, 2nd degree. Small to medium avalanches from wet snow are expected on steep, sunlit slopes. Avalanche release is possible especially with high additional loads, but spontaneous avalanches are also possible occasionally. At high altitudes, snow slabs and pillows of wind-drifted snow may still be present on shady slopes. Their distribution is localised, but an avalanche is possible when they are loaded.

Snowpack

The snow cover is very varied due to the current weather. Strong warming and inversion persists. In the middle altitudes the air temperature ranges from +4 to +10°C. In the shady valleys it stays down to +2°C. This is also related to the quality of the snow cover, which is frozen in the morning and has crust on the surface. Under the influence of sunlight, the snow turns moist to very wet. Ridges and saddles are blown onto the old icy surface. Most of the snow is on the S, SE and E slopes above the forest belt and its height varies from 40 to 100 cm, locally more in the couloirs. At altitudes up to 1400 m above sea level, the snow cover is significantly below average, reaching a maximum of 40 cm.

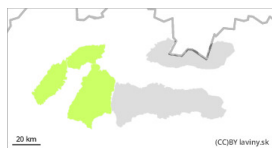
Tendency


Increasing during the day.

fk

Danger Level 2 - Moderate

AM:



Tendency: Increasing avalanche danger 
on Tuesday 21 01 2025



Wet snow



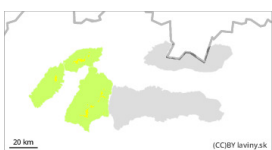
Treeline

Snowpack stability: fair


Frequency: few

Avalanche size: medium

PM:



Treeline

Tendency: Increasing avalanche danger 
on Tuesday 21 01 2025



Wet snow



Treeline

Snowpack stability: poor

Frequency: few

Avalanche size: medium

Beware of wet avalanches on steep, sunlit slopes!

In the Fatras there is only a SMALL avalanche danger in the morning, which increases in the afternoon due to strong warming and sunlight in the highest altitudes (above 1400 m) to MODERATE, 2nd degree. Small to moderate avalanches from wet snow are expected on steep, sunlit slopes. Avalanche release is possible especially with large additional loads, exceptionally spontaneous avalanches are also possible.

Snowpack

The snow cover is very varied due to the current weather. Strong warming and inversion persists. In the middle altitudes the air temperature ranges from +4 to +10°C. In the shady valleys, it stays around +2°C during the day. This is also related to the quality of the snow cover, which is frozen in the morning and has crust on the surface. Under the influence of sunlight, the snow turns moist to very wet. Ridges and saddles are blown onto the old icy surface. Most of the snow is on the S, SE and E slopes above the forest belt and its height varies from 30 to 70 cm, locally more in the couloirs. At altitudes up to 1400 m above sea level there is very little snow, the maximum height is 40 cm.

Tendency

Increasing during the day.

fk