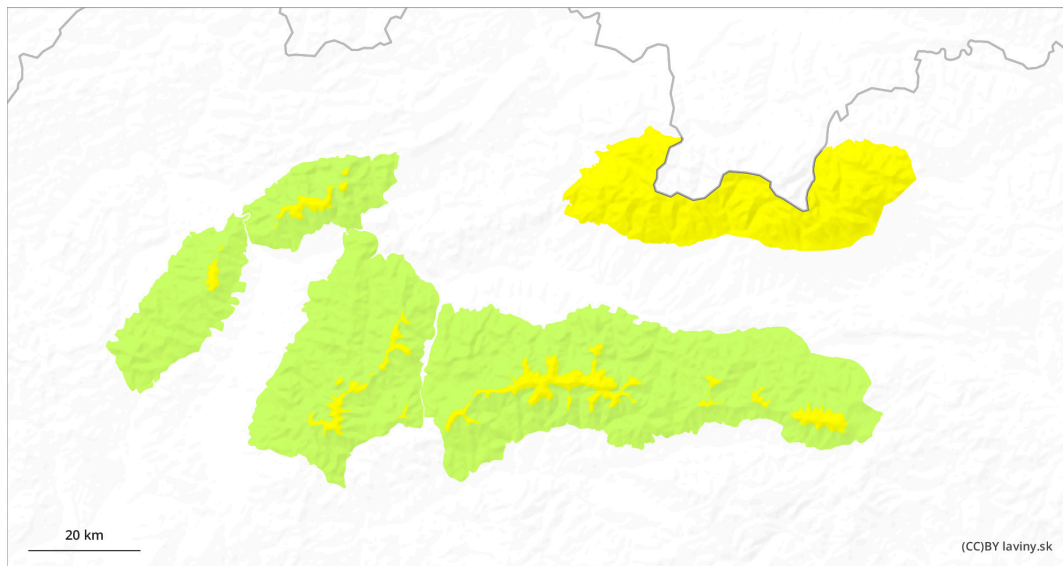
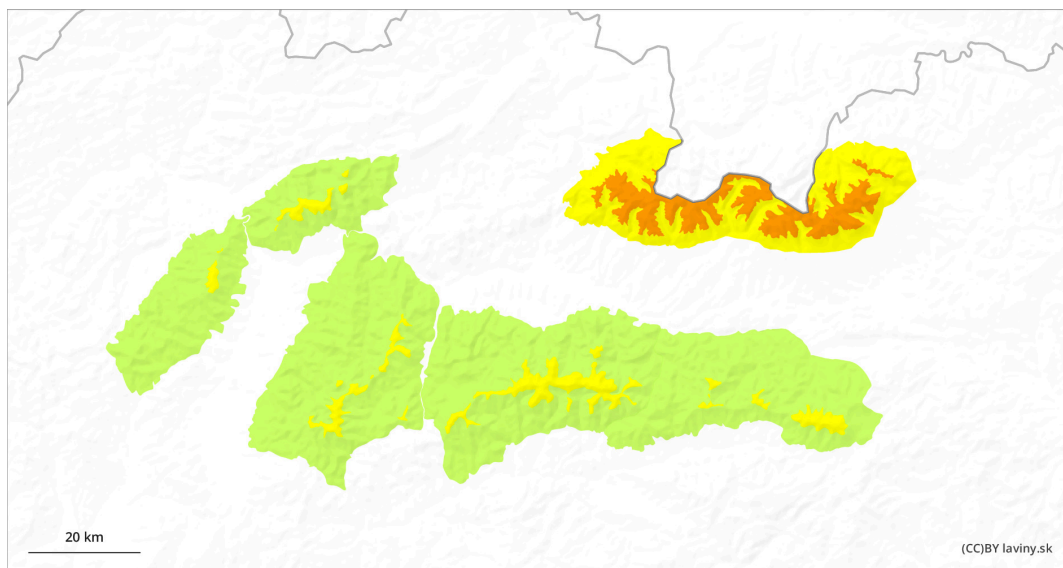


## AM



## PM



## Danger Level 3 - Considerable

**AM:**



**Tendency: Increasing avalanche danger**   
on Monday 13 01 2025



Wind slab



Treeline

Snowpack stability: fair  
Frequency: some  
Avalanche size: medium



New snow




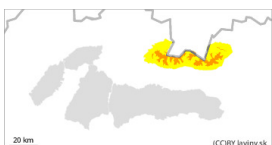
Snowpack stability: fair  
Frequency: some  
Avalanche size: medium

**PM:**



Treeline

**Tendency: Increasing avalanche danger**   
on Monday 13 01 2025



Wind slab



Treeline

Snowpack stability: poor  
Frequency: some  
Avalanche size: large



New snow



Snowpack stability: poor  
Frequency: some  
Avalanche size: medium

Beware of wind-wound boards laid on hard ground. Occasionally, spontaneous avalanches from new snow may occur.

Moderate avalanche danger is declared in the High and Western Tatras. In the afternoon it will change to increased, i.e. the third degree. The main avalanche problem is wind-blown snow and all orientations are dangerous. Avalanches are possible with only a small additional load, especially on steep slopes. Watch out for narrow couloirs, leeward sides of ridges and places under rock walls. Here there may be wind-beaten slabs and cushions that are deposited on hard ground. The two layers are weakly interconnected. Occasionally, medium-sized spontaneous avalanches may also occur, mainly from new snow.

### Snowpack

Up to 30 cm of new mostly powdery snow has fallen in the last 48 hours. However, due to strong winds, it is blown into the gullies and on the leeward sides of the ridges, possibly into the forest zone. The mountain ridges are blown into the hard and sometimes rocky ground. There is still loose powdery snow in the forest belt. 20 cm of new snow will fall during Sunday. However, the snowfall will be accompanied by gale force winds so the snow cover will be very unevenly distributed and blown into hard slabs and pillows. Movement in the high mountain environment is not recommended.



## Tendency

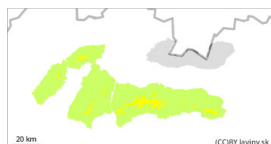
With strong winds and snow rising.

PB.

## Danger Level 2 - Moderate



**Tendency: Increasing avalanche danger**  
on Monday 13 01 2025



Wind slab



Treeline

Snowpack stability: **poor**

Frequency: **some**

Avalanche size: **medium**



New snow



Snowpack stability: **poor**

Frequency: **few**

Avalanche size: **small**

Beware of wind-blown slabs and pillows of new snow that are deposited on hard ground. These layers are poorly bonded to each other.

In the Fatras and Low Tatras there is a moderate avalanche danger above the forest zone. The main avalanche problem is wind-blown snow and all orientations are dangerous. Avalanches are possible especially with high additional loads. Watch out for narrow couloirs, leeward sides of ridges and places under rock walls. Here there may be wind-beaten slabs and pillows that are deposited on hard ground. The two layers are weakly interconnected. Small to medium avalanches are expected and pose a risk, especially in combination with terrain traps.

### Snowpack

In the Fatras and Low Tatras, up to 15cm of new powder snow fell during the last snowfall period. However, due to strong winds, it is very unevenly distributed and blown into hard slabs and pillows. There is still loose powder snow in the forest zone. The ridges are blown into a hard and sometimes rocky base. Up to 15 cm of new powder snow will fall during Sunday. The snowfall will be accompanied by very strong winds. Movement in the mountain environment is not recommended.

### Tendency

With snowfall and windromm rising.

PB.