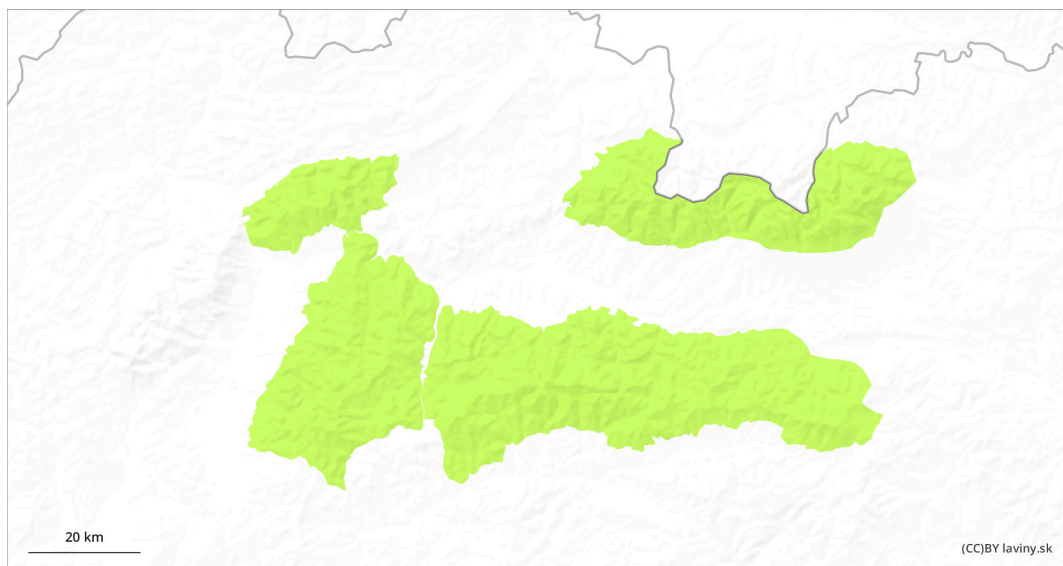
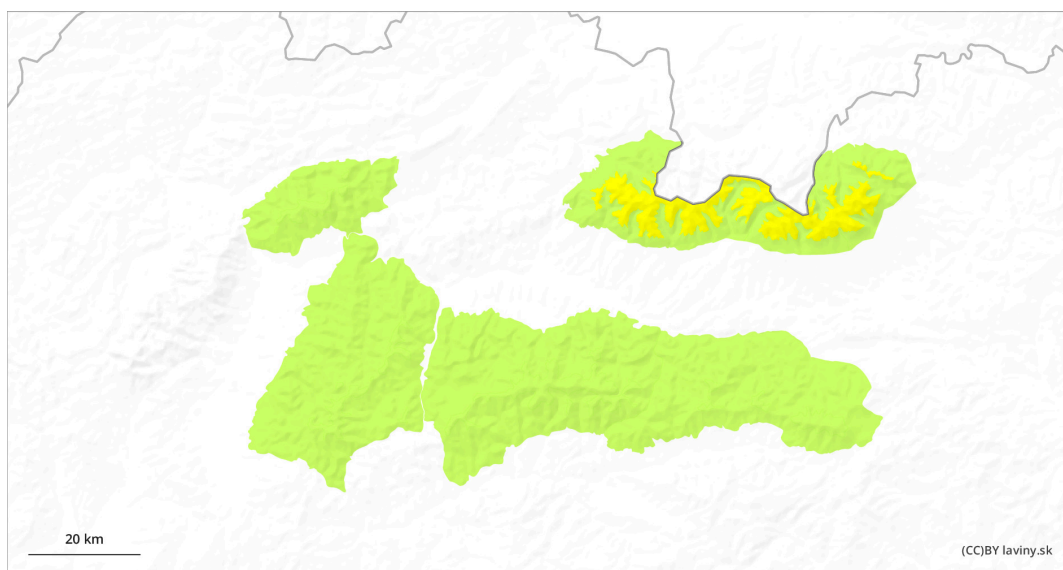


## AM

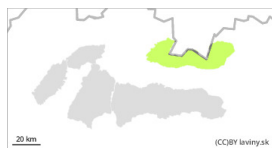



## PM



## Danger Level 2 - Moderate

AM:



**Tendency: Increasing avalanche danger**   
on Wednesday 08 01 2025



Wet snow



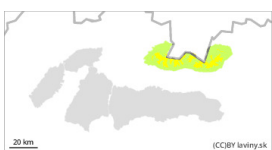
Treeline

Snowpack stability: fair

Frequency: few

Avalanche size: medium

PM:



Treeline

**Tendency: Increasing avalanche danger**   
on Wednesday 08 01 2025



New snow



Treeline

Snowpack stability: poor

Frequency: some

Avalanche size: medium

## Watch out for slabs of new snow that will fall afternoons.

In the Western and High Tatras there is a low (1st degree) avalanche danger in the morning and a moderate (2nd degree) avalanche danger in the afternoon above the treeline. In the morning temperature will be decreasing, that will stabilize the snow cover. Snow will start to fall in the afternoon. 10 - 15 cm of new snow will fall. The snow will be beaten down by the wind into slabs and pillows of varying hardness, which will be placed on a hard base, with the two layers weakly interconnected with each other. Due to the overall low snow cover, these may be mostly only small or medium avalanches.

## Snowpack

The snow is very unevenly distributed due to the strong wind. The ridges are blown on hard ground. There are a few ice crusts in the snow cover, with square-grained snow underneath. The crusts are not load-bearing, so they break through when moving on foot. Movement off the beaten track is difficult. Cooling causes the snow surface to freeze and harden. This will increase its stability. Snow will start to fall in the afternoon. On average, there is between 20 and 50 cm of snow in our mountains. The continuous snow cover is mostly above the forest belt.

## Tendency

Slightly rising with snow in the afternoon.

## Danger Level 1 - Low



**Tendency: Increasing avalanche danger** 

on Wednesday 08 01 2025



Wet snow



Treeline

Snowpack stability: fair

Frequency: few

Avalanche size: small



New snow



Treeline

Snowpack stability: fair

Frequency: few

Avalanche size: small

### Watch out for slabs of new snow that will fall this afternoon.

In Mala, Veľká Fatra and Low Tatras there is a low avalanche danger (1st degree) above the treeline. In the morning it will get warmer and colder, which will stabilize the snow cover. In the afternoon it will start to snow. Up to 10 cm of new snow will fall. The snow will be beaten down by the wind into slabs and pillows of varying hardness, which will be placed on a hard base, with the two layers weakly interconnected with each other. Due to the overall low snow cover, these may be mostly only small avalanches.

### Snowpack

The snow is very unevenly distributed due to the strong wind. The ridges are blown on hard ground. There are a few ice crusts in the snow cover, with square-grained snow underneath. The crusts are not load-bearing, so they break through when moving on foot. Movement off the beaten track is difficult. Cooling causes the snow surface to freeze and harden. This will increase its stability. Snow will begin to fall in the afternoon. On average, there is between 20 and 50 cm of snow in our mountains. The continuous snow cover is mostly above the forest belt.

### Tendency

Slightly rising with snow in the afternoon.

PK