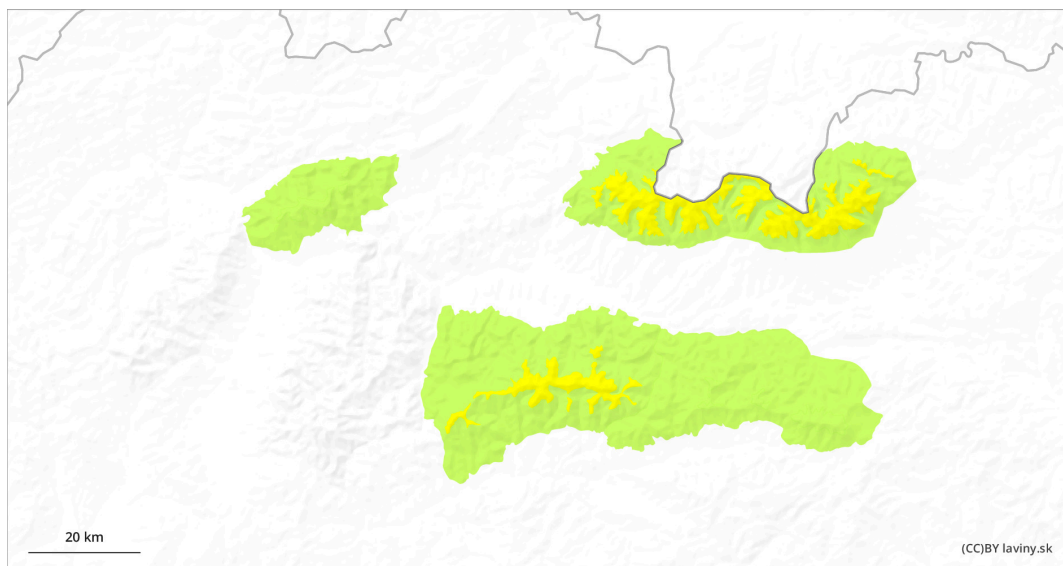
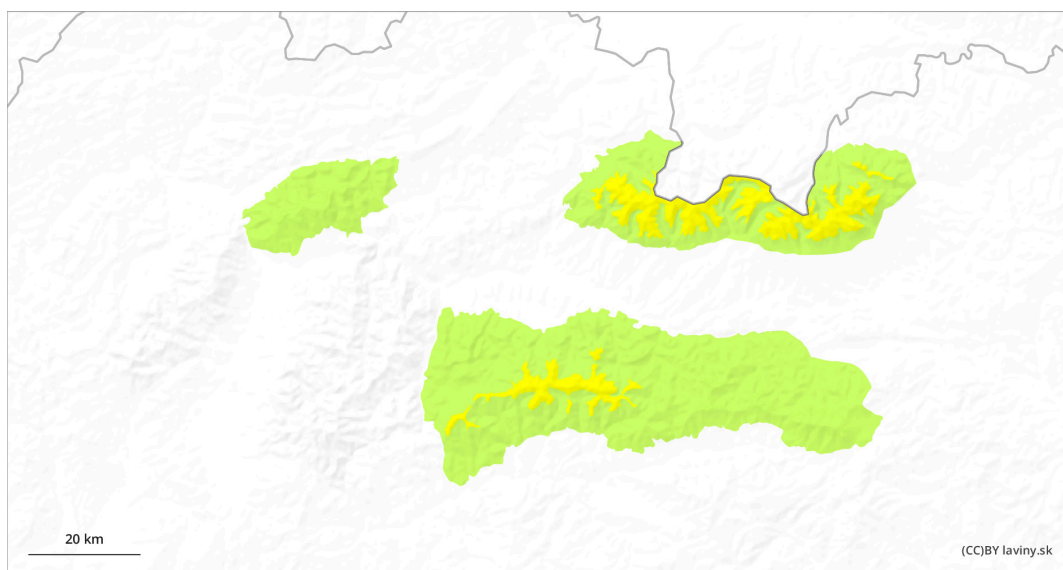


AM

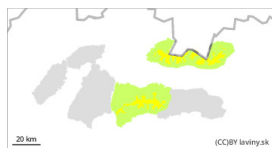


PM



Danger Level 2 - Moderate

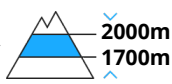
AM:



Tendency: **Increasing avalanche danger**
on Monday 29 04 2024



Wet snow

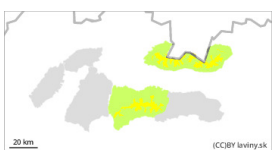


Snowpack stability: **poor**

Frequency: **few**

Avalanche size: **medium**

PM:



Tendency: **Increasing avalanche danger**
on Monday 29 04 2024



Wet snow



Snowpack stability: **poor**

Frequency: **some**

Avalanche size: **medium**

Watch out for wet avalanches when it warms up during the day!

Moderate avalanche danger (2) persists at altitudes above 1700 m above sea level. Wet snow on sunlit slopes is becoming a major problem due to the strong warming. Avalanche release is possible especially with high additional loads, but spontaneous avalanches from wet snow are also expected to occur. On shady slopes in the high Tatra Mountains, snowslabs occurs locally. Avalanche release is also possible here with higher additional loads.

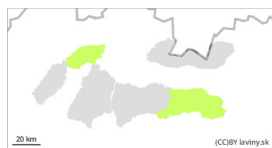
Snowpack

The snow cover is slightly frozen in the morning, but due to the strong sunlight it quickly turns damp to wet. On the surface there is newer snow from the last snowfall, under which there is usually old firn snow. At the highest altitudes of the Tatras, drier slab snow occurs locally on shady slopes. Depending on the orientation, the continuous snow cover can be found from about 1500 m above sea level

Tendency

Rising as the day warms up. FK

Danger Level 1 - Low



Tendency: Increasing avalanche danger

on Monday 29 04 2024



Wet snow



1400m

Snowpack stability: poor

Frequency: few

Avalanche size: small

Occasional wet avalanches possible on very steep slopes.

In the area of Mala Fatra and the eastern part of the Low Tatras there is only a SMALL avalanche danger (1). Smaller avalanches can occur only on very steep slopes. Firstly, with greater additional loads, or smaller spontaneous avalanches and slides, especially with warming temperatures and sunshine in the midday hours.

Snowpack

The snow cover is mostly made up of new snow. Only at the highest altitudes and in troughs is there old firn snow under the new snow. With warming temperatures and strong sunlight during the day, the snow gets wet and becomes distinctly wet. A continuous snow cover is found in Mala Fatra from about 1300 m above sea level, in the Low Tatras from 1500 m above sea level.

Tendency

Rising as the day warms up. FK