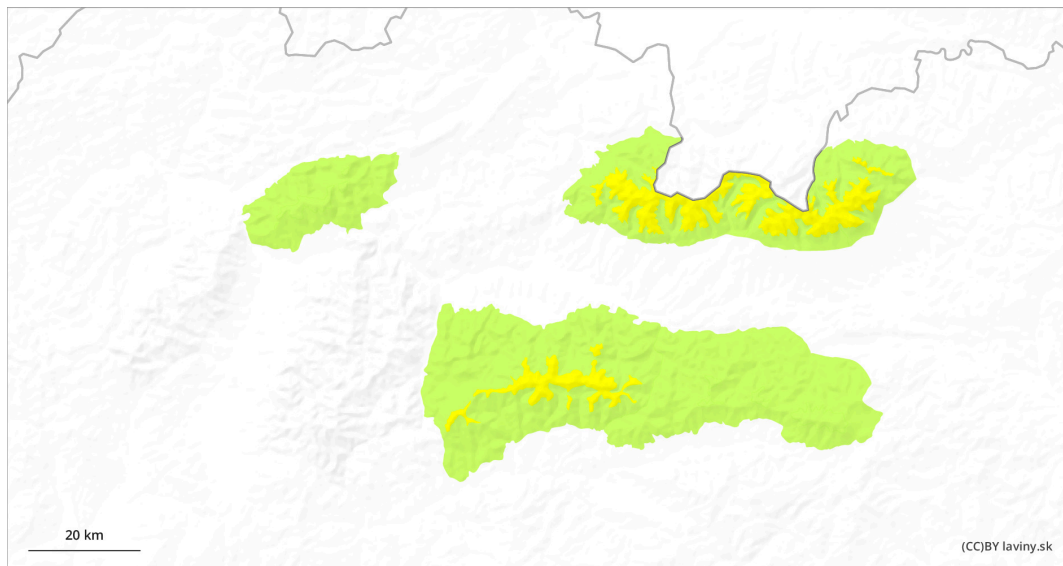
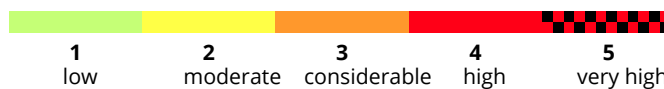
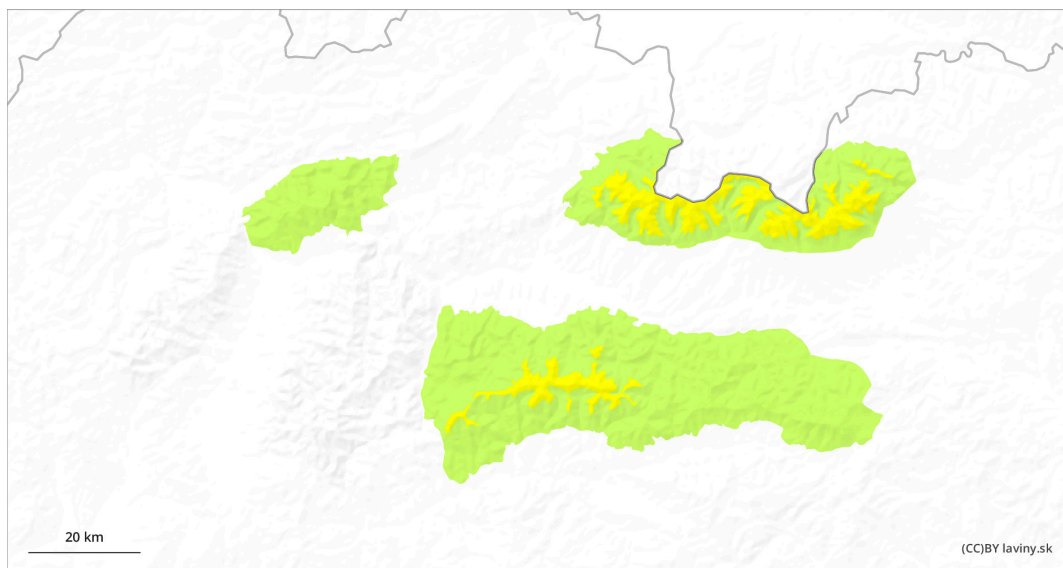


AM

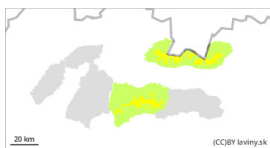


PM



Danger Level 2 - Moderate

AM:



Tendency: Constant avalanche danger →
on Sunday 28 04 2024



New snow

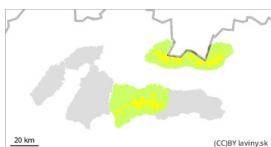


Snowpack stability: poor

Frequency: few

Avalanche size: medium

PM:



Tendency: Constant avalanche danger →
on Sunday 28 04 2024



New snow



Snowpack stability: poor

Frequency: few

Avalanche size: medium



Wet snow



Snowpack stability: poor

Frequency: few

Avalanche size: small

Watch out for wet avalanches when it warms up during the day!

Moderate (2) avalanche danger persists at altitudes above 1700 m above sea level. Wet snow on sunlit slopes is becoming a major problem due to gradual warming. Avalanche release is possible especially with high additional loads, but smaller spontaneous avalanches from wet snow on very steep slopes are also expected. Dry, sometimes snowslabs is still present on shady slopes at high altitudes. Avalanche release is also possible here with higher additional loads.

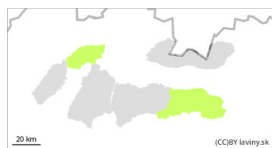
Snowpack

The snow cover on the surface is made up of new snow 10 to 30 cm thick, usually with old firn snow underneath. The surface of the snow varies according to the exposure. On the southern slopes there is crust, on the northern slopes the snow is still dry, sometimes in the form of snow slabs. During the day, as the weather warms up and the sun shines, the snow surface turns damp to wet. Under the new snow there is older firn snow. A continuous snow cover is found from about 1500 m above sea level

Tendency

Persistent. FK

Danger Level 1 - Low



Tendency: Constant avalanche danger →
on Sunday 28 04 2024



Wet snow



1400m

Snowpack stability: fair

Frequency: few

Avalanche size: medium

Occasional wet avalanches possible on very steep slopes.

Due to the recent snowfall (10 to 20 cm), there is a possibility of avalanches on steep slopes. Both with greater additional loads, but also smaller spontaneous avalanches and landslides, especially with warming temperatures and sunshine in the midday hours.

Snowpack

The snow cover is mostly made up of new snow. Only at the highest altitudes and in troughs is there old firn snow under the new snow. When the weather warms up and the sun shines during the day, the new snow becomes wetter, reducing its stability.

Tendency

Persistent . FK