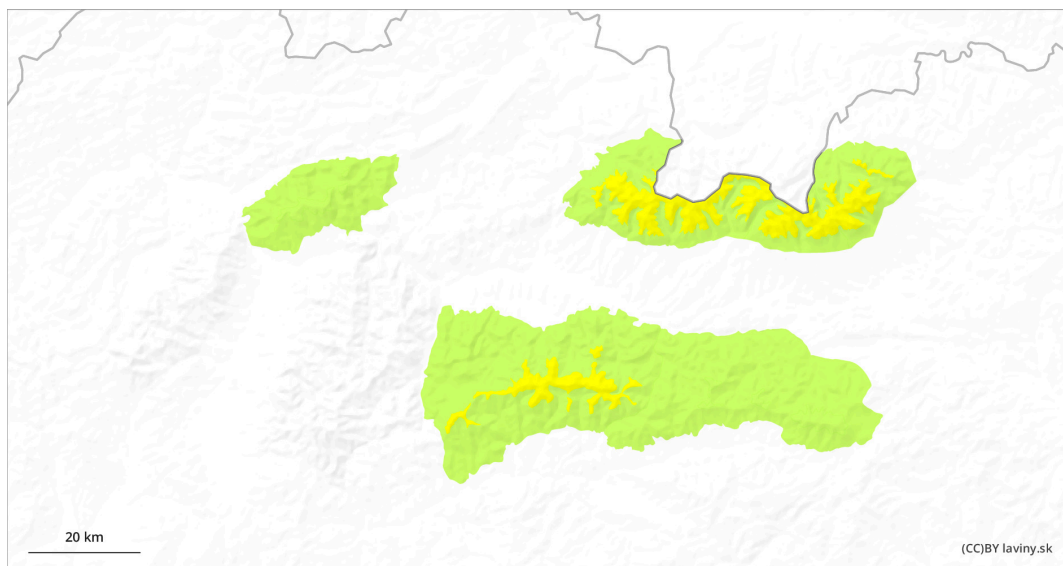
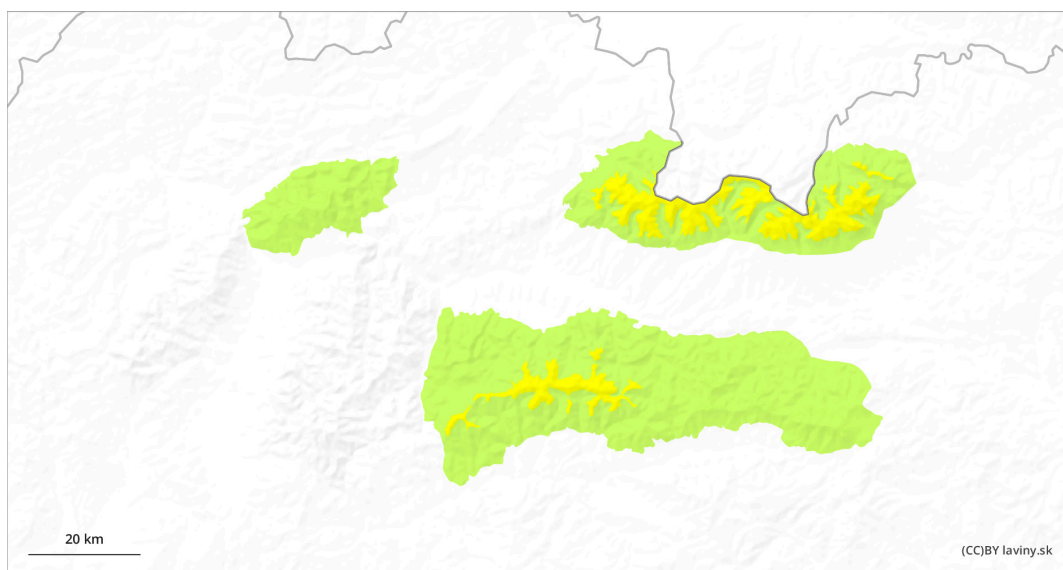


AM

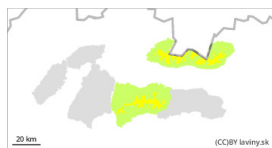


PM



Danger Level 2 - Moderate

AM:



Tendency: Increasing avalanche danger
on Saturday 27 04 2024



New snow



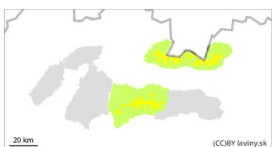
1700m

Snowpack stability: poor

Frequency: some

Avalanche size: medium

PM:



Tendency: Increasing avalanche danger
on Saturday 27 04 2024



New snow



1700m

Snowpack stability: poor

Frequency: some

Avalanche size: medium



Wet snow



1700m

Snowpack stability: poor

Frequency: some

Avalanche size: medium

There is a MODERATE avalanche danger in the High, Western and Low Tatras above the 1700 m above sea level.

During the last snowfall, 10 to 25 cm of new snow fell. This is a main avalanche problem, especially on steep slopes at high altitudes and on sunlit slopes. Avalanche release is possible with higher additional loads, but smaller spontaneous avalanches from wet snow are also expected to occur, especially on sunny slopes. Also watch out for smaller avalanches related to extreme terrain and terrain traps.

Snowpack

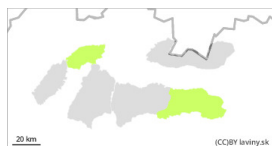
During Wednesday and the following night, 10 to 25 cm of new snow fell in the region, mostly in light to moderate winds. The accumulated snow slabs are only localized. Old firn snow is under the new snow at altitudes above about 1500 m above sea level. The snow cover is slightly hardened in the morning, during the day in sunny weather it becomes significantly wetter and its stability decreases.


Tendency

Rising as the day warms up. FK

Danger Level 1 - Low

AM:



Tendency: Increasing avalanche danger 
on Saturday 27 04 2024



New snow



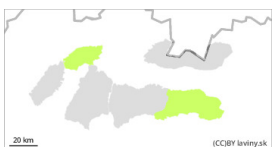
1400m

Snowpack stability: fair

Frequency: few

Avalanche size: medium

PM:



Tendency: Increasing avalanche danger 
on Saturday 27 04 2024



New snow



1400m

Snowpack stability: fair

Frequency: few

Avalanche size: medium



Wet snow



1400m

Snowpack stability: poor

Frequency: few

Avalanche size: small

In the eastern part of the Low Tatras and in Krivanská Mala Fatra there is a **SMALL** avalanche danger.

Due to the recent snowfall (10 to 20 cm), there is a possibility of avalanches on steep slopes. Both with higher additional loads, but also smaller spontaneous avalanches and slides, especially with warming temperatures and sunshine in the midday hours.

Snowpack

The snow cover is mostly made up of new snow. Only at the highest altitudes and in troughs is there old firn snow under the new snow. When the weather warms up and the sun shines during the day, the new snow becomes wetter, reducing its stability.

Tendency

Slightly rising as the day warms up. FK