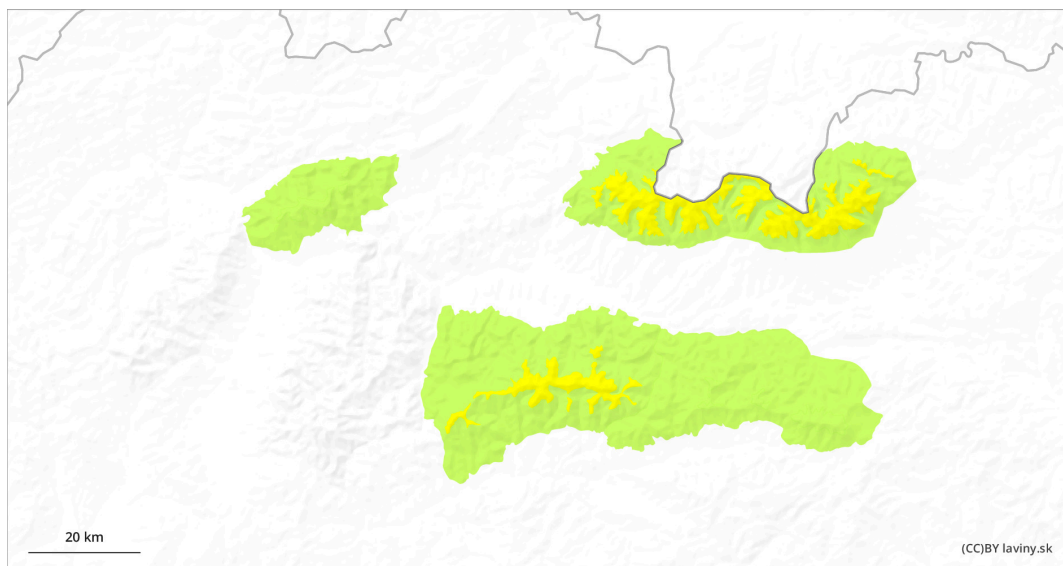
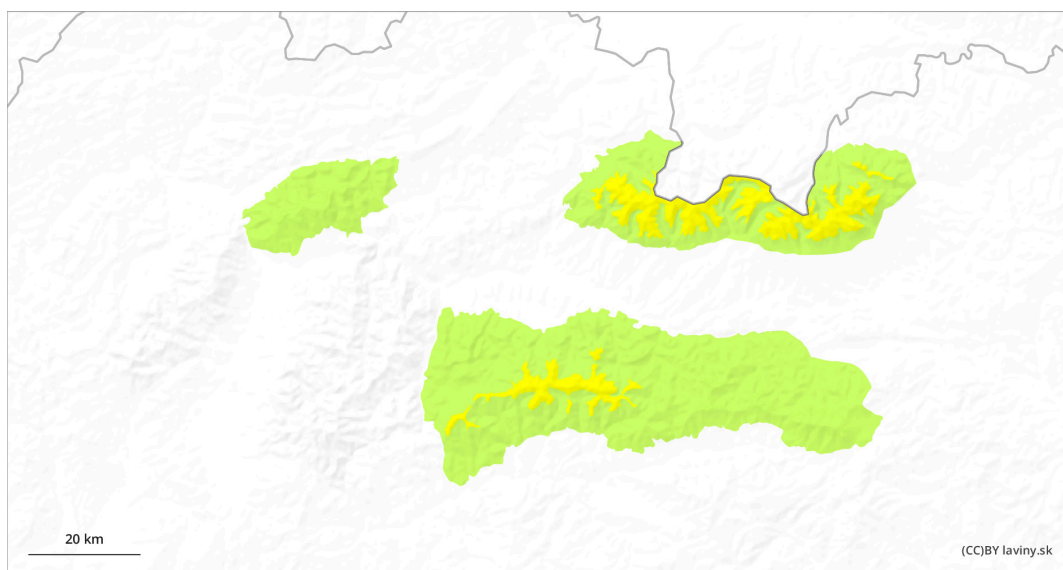


## AM

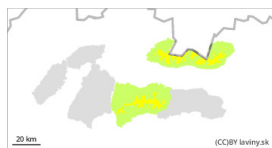


## PM



## Danger Level 2 - Moderate

AM:



New snow

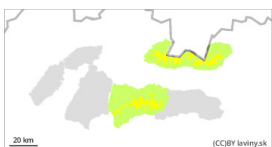


Snowpack stability: poor

Frequency: some

Avalanche size: medium

PM:



New snow



Snowpack stability: poor

Frequency: some

Avalanche size: medium



Wet snow



Snowpack stability: poor

Frequency: some

Avalanche size: medium

Be careful on steep slopes with larger amount of new snow. Expect wet spontaneous avalanches on sunlit slopes in the afternoon.

In the Tatras and Low Tatras there is a moderate avalanche danger (2nd degree) at altitudes above 1700 m above sea level. The main avalanche problem is the new snow that has fallen in the last 3 days. Narrow couloirs, leeward sides of ridges and places under rock walls where there is a larger amount of new snow are dangerous. Due to the changing wind, the dangerous places are in different orientations. The release of slab avalanches is possible with large additional loads on steep slopes. In the afternoon, with warming temperatures and sunshine, smaller to medium-sized spontaneous avalanches of wet snow may occur on steep slopes.

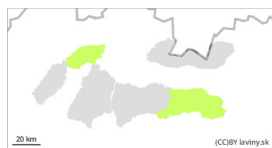
### Snowpack

In the last 3 days 5 to 30 cm of new snow fell in the mountains of Slovakia above the 1200 m above sea level. Mostly in the altitudes above 1700 m above sea level. It is unevenly distributed due to changing strong winds. Wind-exposed positions with old snow are mostly hard to icy, and conversely, on leeward slopes there is a layer of new snow of varying quality from loose to wind-drifted snow. During the day (Tuesday 23.4) it will warm up slightly, and in the afternoon the snow cover will become moist and even wet on sunlit slopes, with a possible wet avalanche.

### Tendency

Rising during the day as it warms up. FK

## Danger Level 1 - Low



**Tendency: Increasing avalanche danger**

on Wednesday 24 04 2024



New snow



1400m

Snowpack stability: fair

Frequency: few

Avalanche size: small

**Beware of very steep slopes with new snow in connection with terrain traps.**

In the eastern part of the Low Tatras and in Krivanská Mala Fatra there is only a SMALL avalanche danger (1st degree). The avalanche problem is NEW SNOW in all orientations. In narrow couloirs and under rock walls locally there may be a large amount of new snow. Its release is possible with large additional loads on very steep slopes. Smaller spontaneous avalanches of wet snow may also occur as the day warms up.

### Snowpack

During the last snowfall period, between 5 and 20 cm of new snow fell at the highest altitudes. However, it is unevenly distributed due to the previous strong winds. The windward sides of the mountains are hard and icy, with localised slabs of wind-blown snow on the leeward sides of the highest altitudes. During the day, when the weather warms up and the sun shines, the snow cover will be wet.

### Tendency

slightly rising as the day warms up. FK