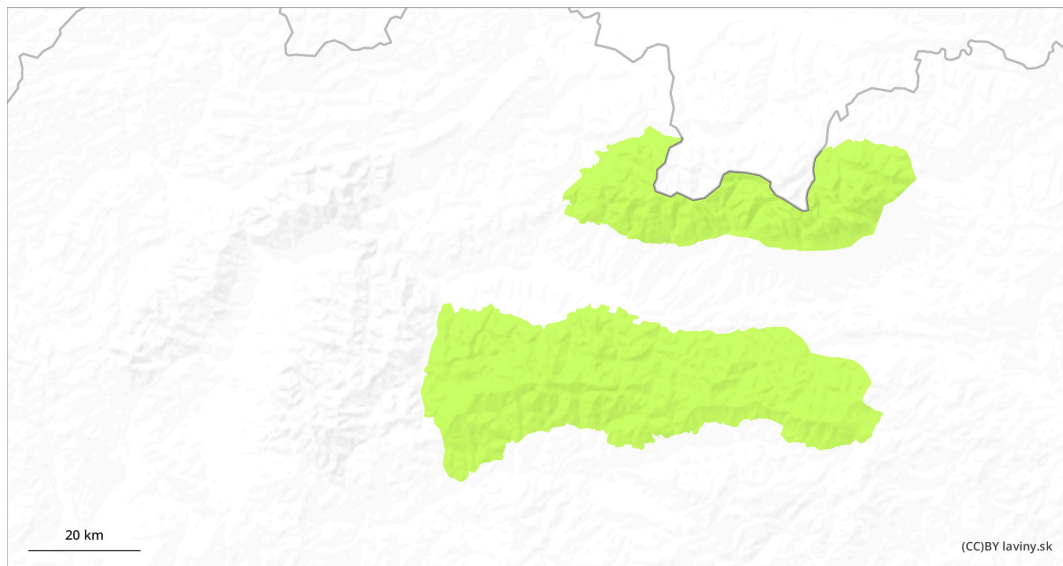
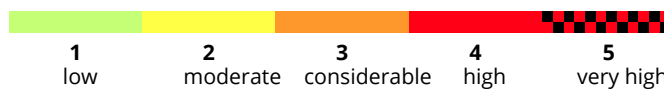
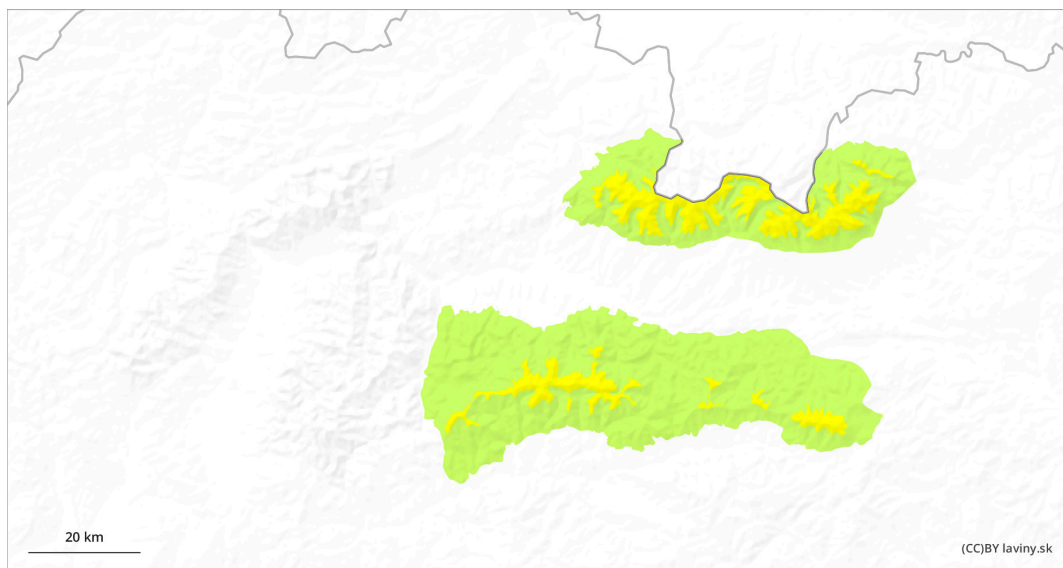


AM




PM

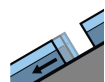


Danger Level 2 - Moderate

AM:



Tendency: Increasing avalanche danger 
on Saturday 13 04 2024



Gliding snow



1500m

Snowpack stability: fair

Frequency: few

Avalanche size: medium



Wet snow



1500m

Snowpack stability: fair


Frequency: few

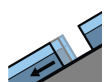
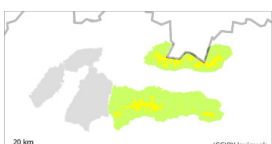
Avalanche size: medium

PM:



1500m

Tendency: Increasing avalanche danger 
on Saturday 13 04 2024



Gliding snow



1500m

Snowpack stability: fair

Frequency: some

Avalanche size: medium



Wet snow



1500m

Snowpack stability: fair

Frequency: some

Avalanche size: medium

Beware of wet avalanches and avalanches!

Due to warm weather and sunlight, most steep and very steep slopes, especially those with a southerly orientation, are at risk of wet avalanches, slides or foundation avalanches. A slight overnight cooling will make the cover relatively firm. Avalanches are more likely to occur in the afternoon. Small avalanches are also dangerous, with the risk of falling over rock thresholds. In Veľká and Malá Fatra, the snow cover is very patchy and does not pose a significant avalanche danger. However, there is a risk of slipping on snow firm fields.

Snowpack

The snow cover is soaked throughout the day and very little stabilises at night. There is a high risk of new foundation avalanches where the snowpack is soaked through to the grass base. In Veľká and Malá Fatra the snow cover is very patchy and there is a risk of slipping on snow firm fields.

Tendency

During the day due to warming and sunlight rising.