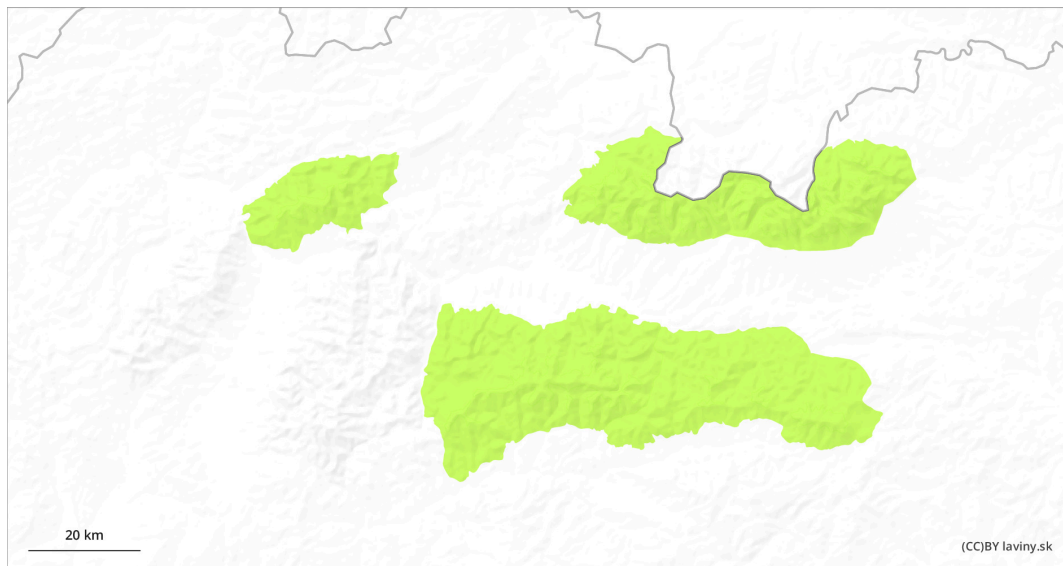
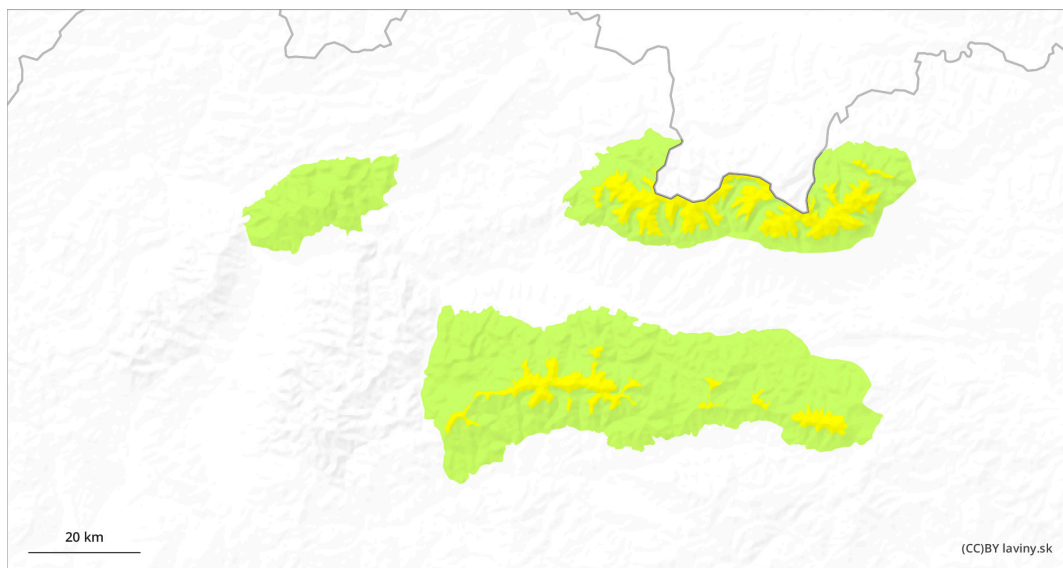


## AM




## PM



## Danger Level 2 - Moderate

**AM:**



**Tendency: Increasing avalanche danger**   
on Thursday 11 04 2024



Wet snow

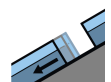


1500m

Snowpack stability: fair

Frequency: few

Avalanche size: medium



Gliding snow



1500m

Snowpack stability: fair


Frequency: few

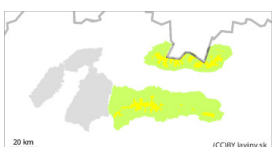
Avalanche size: medium

**PM:**



1500m

**Tendency: Increasing avalanche danger**   
on Thursday 11 04 2024



Wet snow

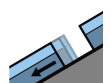


1500m

Snowpack stability: fair

Frequency: some

Avalanche size: medium



Gliding snow



1500m

Snowpack stability: fair

Frequency: some

Avalanche size: medium

## Beware of wet avalanches and avalanches!

Due to warm weather and sunlight, most steep and very steep slopes, especially those with a southerly orientation, are at risk of wet avalanches, slides or foundation avalanches. A slight overnight cooling will make the cover relatively firm. Avalanches are more likely to occur in the afternoon. Small avalanches are also dangerous, with the risk of falling over rock thresholds.

## Snowpack

The snow cover is soaked throughout the day and very little stabilises at night. There is a high risk of new foundation avalanches where the snowpack is soaked through to the grass base.

## Tendency

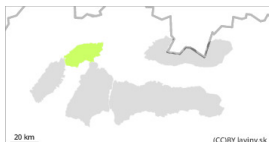
During the day due to warming and sunlight rising.

## Danger Level 1 - Low



**Tendency: Increasing avalanche danger**

on Thursday 11 04 2024



Wet snow

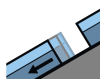


1400m

Snowpack stability: fair

Frequency: few

Avalanche size: small



Gliding snow



1400m

Snowpack stability: fair

Frequency: few

Avalanche size: small

### Beware of wet avalanches!

The avalanche problem is wet snow. In the case of a release, only small avalanches or avalanches will occur. Especially in the afternoon.

### Snowpack

The snow cover is completely transformed and stabilized. During the day the snow is softening due to the high temperature. At altitudes below 1300 m above sea level, the snow cover is only sporadic.

### Tendency

With warming slightly rising.

Compiled by: Martin Bešínský