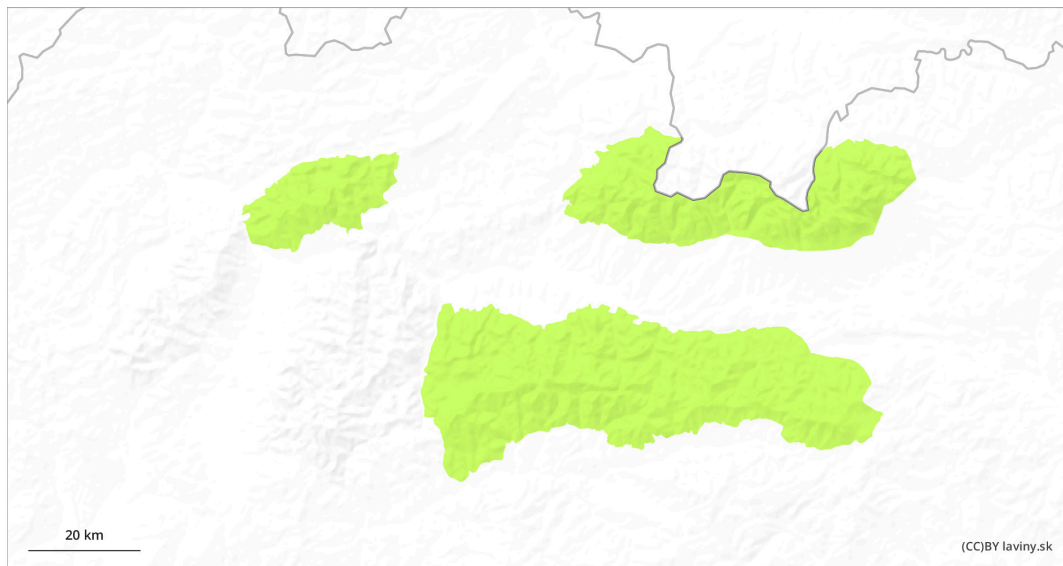
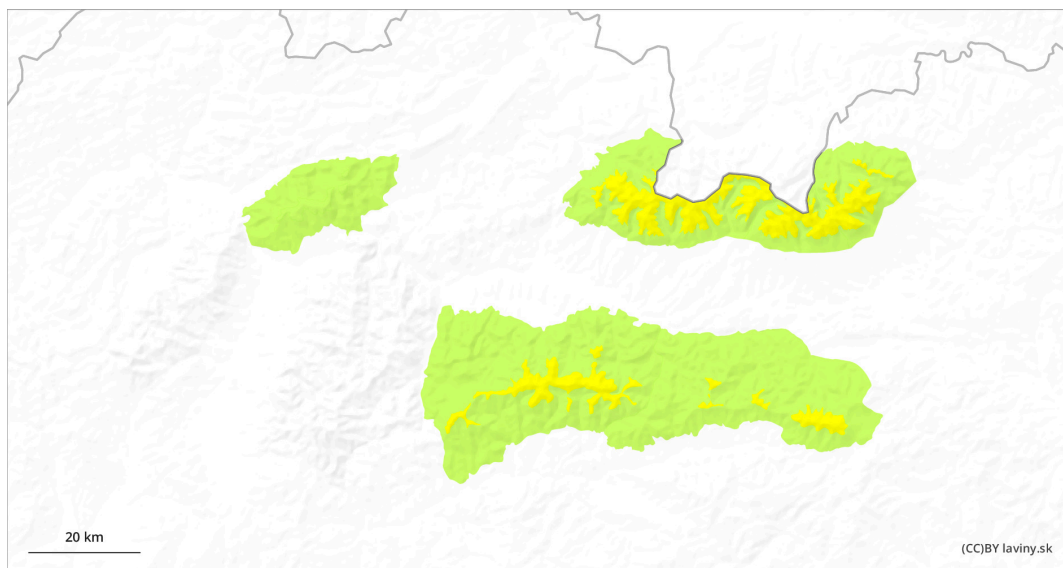


## AM



## PM

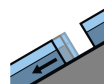


## Danger Level 2 - Moderate

**AM:**



**Tendency: Increasing avalanche danger**   
on Tuesday 09 04 2024



Gliding snow



1500m

Snowpack stability: fair

Frequency: few

Avalanche size: medium



Wet snow



1500m

Snowpack stability: fair


Frequency: few

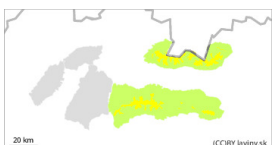
Avalanche size: medium

**PM:**



1500m

**Tendency: Increasing avalanche danger**   
on Tuesday 09 04 2024



Wet snow

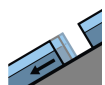


1500m

Snowpack stability: very poor

Frequency: few

Avalanche size: medium



Gliding snow



1500m

Snowpack stability: fair

Frequency: few

Avalanche size: large

## Beware of wet avalanches!

In the High, Low and Western Tatras, a moderate avalanche danger is declared in the afternoon (level 2). The main avalanche problem is wet snow, the risk increases in the afternoon due to clear, sunny weather. The snow cover will become soaked and lose cohesion. Spontaneous small avalanches or avalanches may also occur. Caution in very steep slopes where even a small avalanche can cause a shear and fall, resulting in mechanical injuries. Foundation avalanches from slippery snow can also occur due to the soaking of the entire snow profile.

## Snowpack

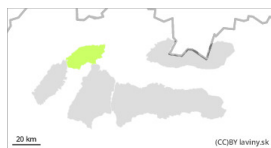
The snow cover is melting due to warming. The surface is especially wet in the afternoon and it is getting wet. At altitudes below 1300 m above sea level, the snow cover is only sporadic.

## Tendency

Slightly rising in the afternoon as it warms.

<br><br><i> Compiled by: Pavel Krajčí </i>

## Danger Level 1 - Low



**Tendency: Increasing avalanche danger**

on Tuesday 09 04 2024



Wet snow



1300m

Snowpack stability: **poor**

Frequency: **few**

Avalanche size: **small**

### Watch out for wet avalanches.

In Malá Fatra, a low avalanche danger (1st degree) is declared above the 1300 m above sea level. The avalanche problem is wet snow. In case of release, only small avalanches or avalanches will occur, mainly in the afternoon.

### Snowpack

The snow cover is completely transformed and stabilized. It will harden at night and in the morning, but will soften again during the day due to high temperatures. At altitudes below 1300 m above sea level, snow cover is only sporadic.

### Tendency

With warming slightly rising..

*Compiled by: Pavel Krajčí*