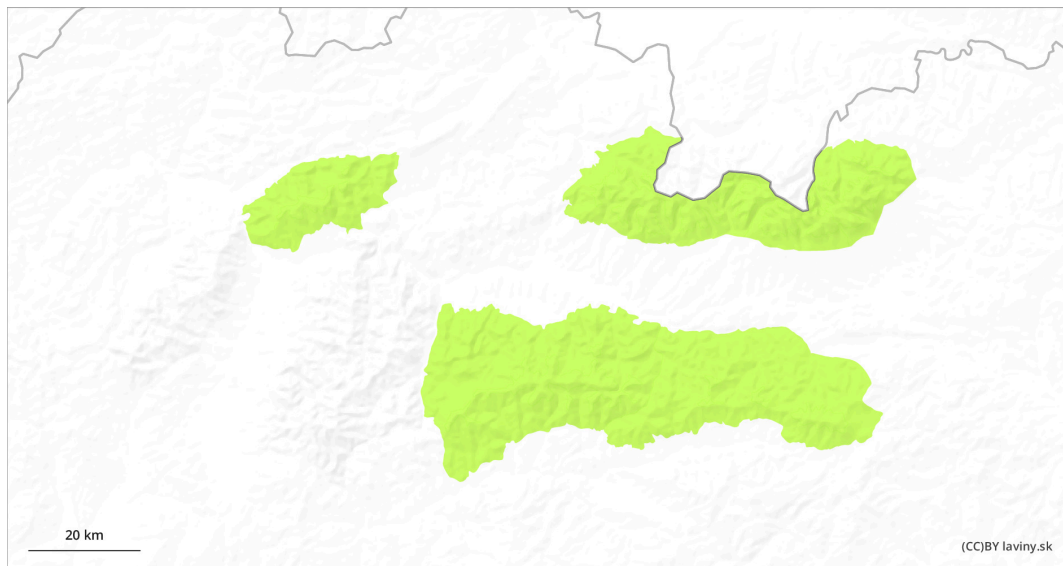
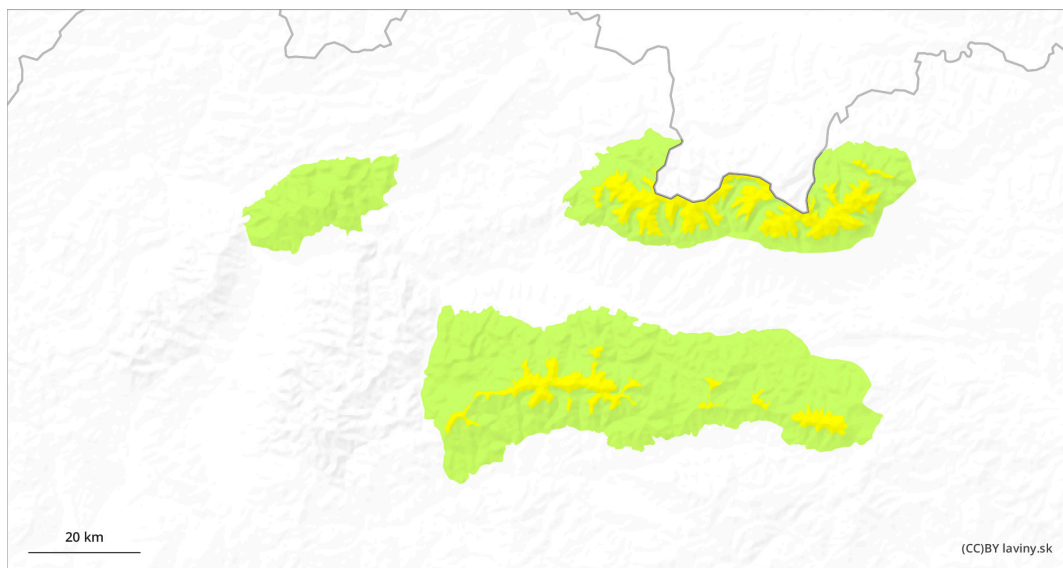


AM



PM

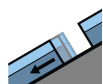


Danger Level 2 - Moderate

AM:



Tendency: Increasing avalanche danger 
on Monday 08 04 2024



Gliding snow



1500m

Snowpack stability: fair

Frequency: few

Avalanche size: medium



Wet snow



1500m

Snowpack stability: fair

Frequency: few

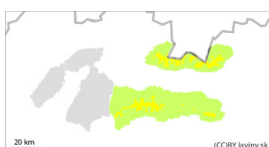
Avalanche size: medium

PM:



1500m

Tendency: Increasing avalanche danger 
on Monday 08 04 2024



Wet snow

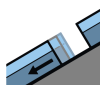


1500m

Snowpack stability: poor

Frequency: some

Avalanche size: small



Gliding snow



1500m

Snowpack stability: fair

Frequency: few

Avalanche size: large

Beware of wet avalanches!

In the High and Western Tatras, a moderate avalanche danger (2nd degree) has been declared for the afternoon. Up to 25 cm of new snow fell above 1,500 m above sea level on Tuesday, but it is gradually melting. The new snow fell on top of the old hard snow. These two layers have become well bonded over the last few days. But the problem is warming, which brings the risk of wet avalanches, a risk that increases in the afternoon due to clear, sunny weather. The snow cover will become soaked and lose cohesion. Spontaneous small avalanches or avalanches can also occur. Caution in very steep slopes where even a small avalanche can cause a shear and fall, resulting in mechanical injuries. Glide avalanches can also occur due to the soaking of the entire snow profile.

Snowpack

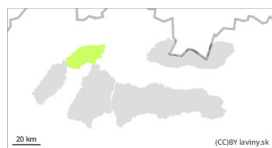
The snow cover is melting due to warming. The surface is wet. At altitudes below 1300 m above sea level, snow cover is only sporadic.

Tendency

With warming slightly rising.

<i> Compiled by: Pavel Krajčí </i>

Danger Level 1 - Low



Tendency: Increasing avalanche danger 

on Monday 08 04 2024



Wet snow



1300m

Snowpack stability: **poor**

Frequency: **few**

Avalanche size: **small**

Watch out for wet avalanches.

In Malá Fatra, a low avalanche danger (1st degree) is declared above the 1300 m above sea level. On Tuesday, up to 35 cm of new snow fell here. However, it has almost completely melted. The new snow has fallen on grassy ground or on old hard snow. These two layers have become well bonded over the last few days. But the problem will be warming, which will bring the risk of wet avalanches. In the event of a release, these will be small avalanches or avalanches.

Snowpack

The snow from Tuesday is melting fast. Underneath, there are snow fields of old firn snow with a layer of Saharan dust on the surface. At altitudes below 1300 m, snow cover is only sporadic.

Tendency

With warming slightly rising..

<i> Compiled by: Pavel Krajčí </i>