

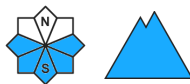
Danger Level 2 - Moderate



Tendency: Constant avalanche danger →
on Tuesday 02 04 2024



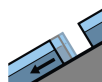
Wet snow



Snowpack stability: **poor**

Frequency: **some**

Avalanche size: **medium**



Gliding snow



Snowpack stability: **poor**

Frequency: **few**

Avalanche size: **large**

Watch out for wet snow!

In the High, Western and Low Tatras there is a moderate avalanche danger (i.e. 2nd degree of the 5-part international scale).

Mechanically released or spontaneous avalanches from wet snow can be expected on very steep slopes. The danger is particularly high with large additional loads.

On slopes with grassy ground, in all orientations, there is a risk of foundation avalanches, which can reach large dimensions. Beware, flowing avalanches have a high destructive potential, even when they are slow!

Snowpack

On Monday, an influx of unusually warm air will peak in our area. The strong south wind does not allow the air temperature even in the highest altitudes of the High Tatras to drop below 0°C even during the night. The snow cover is soaked in the whole profile at altitudes up to 2,200 m above sea level, hence the risk of sliding base avalanches.

Beware, the snow is wet and heavy in a thick layer, even a slide from under your own skis or snowboard can take you off.

Tendency

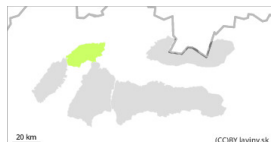
On Tuesday, a cold front will pass through our area from the west, bringing significant cold and snowfall to our mountains. The avalanche danger will change its character, but it can be expected to remain at the same level.

<i> Compiled by Ivan Chlebovec </i>

Danger Level 1 - Low



Tendency: Constant avalanche danger →
on Tuesday 02 04 2024



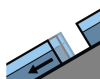
Wet snow



Snowpack stability: **poor**

Frequency: **few**

Avalanche size: **small**



Gliding snow



Snowpack stability: **fair**

Frequency: **few**

Avalanche size: **medium**

Watch out for wet snow!

For Malá Fatra a low avalanche danger is declared (i.e. 1st degree of the 5-part international scale). Mechanically released or small spontaneous avalanches from wet snow can be expected on very steep slopes. The danger for skiers and hikers is especially in connection with terrain traps. In places where a thick layer of snow is accumulated, there is a risk of medium-sized foundation avalanches. Beware, flowing avalanches have great destructive potential, even if they are slow!

Snowpack

On Monday, an influx of unusually warm air will peak in our area. Strong southerly winds will not allow the air temperature to drop below 0°C during the night. The remaining snow cover is soaked throughout the profile, hence the risk of sliding base avalanches. The integrity of the snow cover in Mala Fatra is already significantly compromised even on the main ridge.

Tendency

On Tuesday, a cold front will pass through our area from the west, bringing significant cold and snowfall to our mountains. The avalanche danger will change its character, but it can be expected to remain at the same level.

<i> Compiled by Ivan Chlebovec </i>