

Danger Level 2 - Moderate

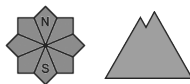


Tendency: Increasing avalanche danger

on Friday 01 03 2024



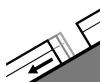
Wet snow



Snowpack stability: **poor**

Frequency: **some**

Avalanche size: **medium**



Gliding snow



2000m

Snowpack stability: **poor**

Frequency: **few**

Avalanche size: **large**

The strong warming continues to have an adverse effect on the avalanche situation.

In the Tatras and in the western part of the Low Tatras there is a MODERATE avalanche danger (2nd level) throughout the day. Wet snow is a defining avalanche problem especially in the afternoon. Avalanche release is possible especially with high additional loads, but spontaneous wet avalanches on steep slopes are also expected. Gliding avalanches may also occur on grassy slopes, which may threaten valley routes.

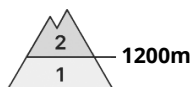
Snowpack

is slightly hardened and frozen in the morning, but due to the strong warming (0°C isotherm rises up to 2500 m asl) the snow cover gets wet during the day. The exception is the shady orientations at the highest altitudes of the Tatra Mountains, where there are still snow slabs, pillows and drifts of wet to dry snow. Wind-exposed ridges are often blown onto hard to icy surfaces. A continuous snow cover is found from an altitude of 1100-1200 m above sea level and reaches a height of 90-300 cm above the tree line.

Tendency

INCREASING during the day when it gets warmer

Danger Level 2 - Moderate



Tendency: Increasing avalanche danger
on Friday 01 03 2024



Wet snow

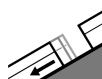


1200m

Snowpack stability: **poor**

Frequency: **some**

Avalanche size: **medium**



Gliding snow



1200m

Snowpack stability: **poor**

Frequency: **few**

Avalanche size: **large**

As a consequence of the strong warming, the occurrence of wet and gliding avalanches is possible at higher altitudes.

In the Fatras and the eastern part of the Low Tatras it persists above the 1200 m above sea level MODERATE avalanche danger, 2nd level. Wet snow is the defining avalanche problem. Avalanche release is possible especially with large additional loads, but spontaneous wet avalanches on steep slopes are also expected. Gliding avalanches may also occur on grassy slopes throughout the day, which may threaten lower elevation hiking trails.

Snowpack

Due to the strong warming, the temperature in the area will reach +3 to +10°C. The snow cover is wet especially in the afternoon, often in the whole profile. Wind-exposed ridges are often blown onto hard to icy surfaces. Continuous snow cover is found from an altitude of 1200 m above sea level and reaches a height of 50 to 150 cm above the tree line

Tendency

INCREASING during the day when it gets warmer