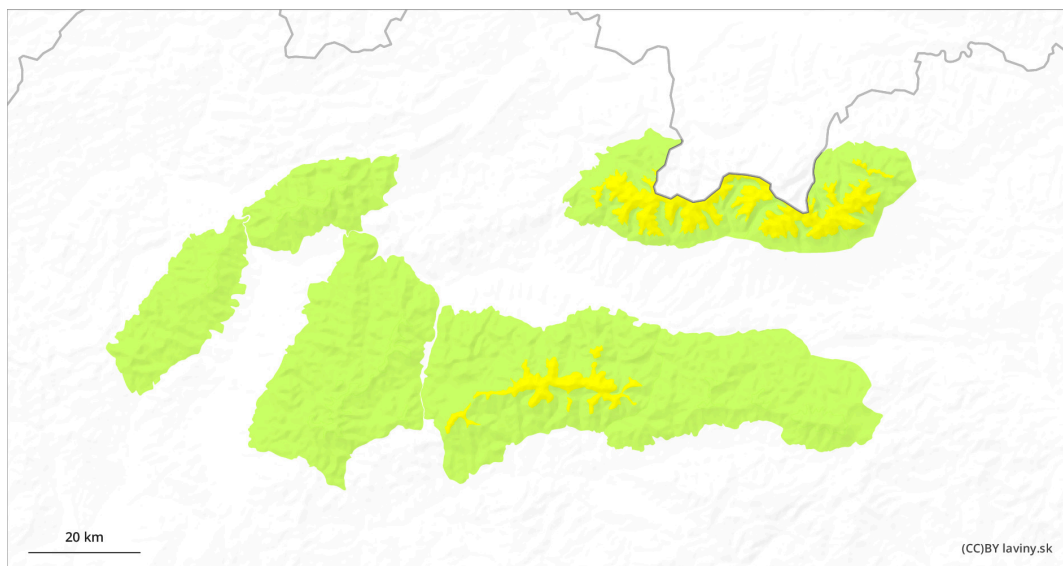
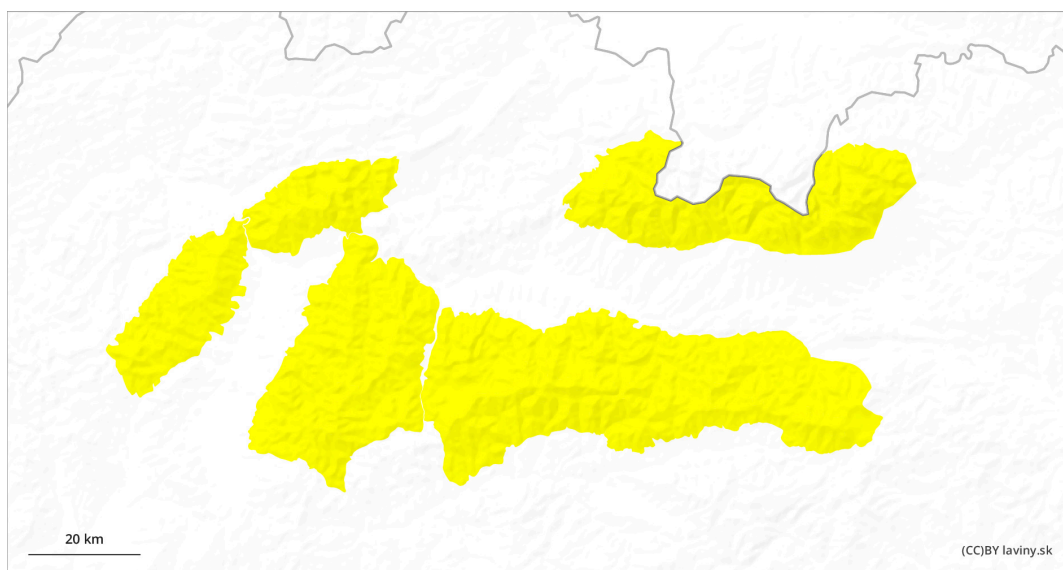


AM

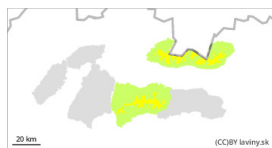


PM



Danger Level 2 - Moderate

AM:



Tendency: **Increasing avalanche danger**
on Monday 26 02 2024



Wind slab

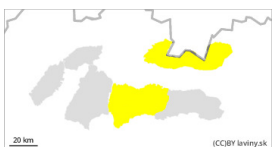


Snowpack stability: **poor**

Frequency: **some**

Avalanche size: **medium**

PM:



Tendency: **Increasing avalanche danger**
on Monday 26 02 2024



Wind slab



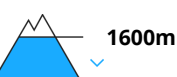
Snowpack stability: **poor**

Frequency: **some**

Avalanche size: **medium**



Wet snow



Snowpack stability: **poor**

Frequency: **some**

Avalanche size: **medium**

At the highest altitudes, wind-blown snow in the form of slabs and pillows. Possibility of wet avalanches in the afternoon due to warming.

The avalanche situation is linked to the 0°C isotherm. In the highest altitudes of the Tatras, above 1700m above sea level, due to the strong wind and snowfall of the previous days, there are snow slabs and pillows of dry snow, which locally lie on the hard ground. They are mainly oriented in the northern sectors and their release is possible especially with high additional loads on steep slopes. Overnight cooling will harden the snow at lower and middle elevations and the avalanche danger will depend on afternoon warming. Wet avalanches may form on all orientations.

Snowpack

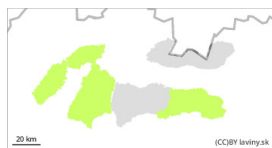
The snow cover is generally packed and well consolidated. The exception is the new snow that has fallen in the last period in the highest altitudes of the Tatras. 15cm in the Low Tatras and up to 10cm in the Western and High Tatras. However, it is very unevenly distributed, mostly in the northern sectors. Warming in the afternoon will make the snow wetter and heavier, wet avalanches may form in the middle altitudes. Very localised basement avalanches and blowdowns may occur at the lowest elevations.

Tendency

Warming rising.

Danger Level 2 - Moderate

AM:



Tendency: Increasing avalanche danger
on Monday 26 02 2024



Wet snow



Snowpack stability: fair

Frequency: few

Avalanche size: small

PM:



Tendency: Increasing avalanche danger
on Monday 26 02 2024



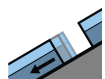
Wet snow



Snowpack stability: poor

Frequency: some

Avalanche size: medium



Gliding snow



Snowpack stability: poor

Frequency: some

Avalanche size: medium

Wet and foundation avalanches especially in the afternoon.

In the Fatras, the avalanche situation is strongly linked to the air temperature. In the morning, the snow will be hard packed and hard, in the afternoon, due to warming, it is expected that the snow will become wet and that wet, grassy slopes will form base avalanches in all orientations.

Snowpack

The snow cover in the Fatras is bound only to the ridge parts. In the forests it is partially disconnected. Due to the night cooling, it is hard and sooty in the morning and damp and wet in the afternoon.

Tendency

Due to the warming effect rising.