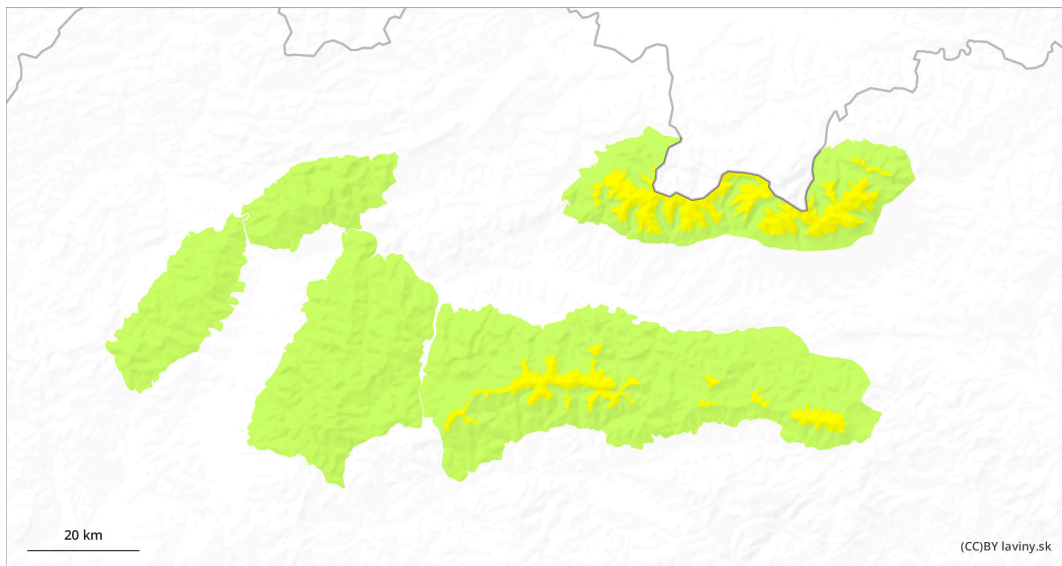
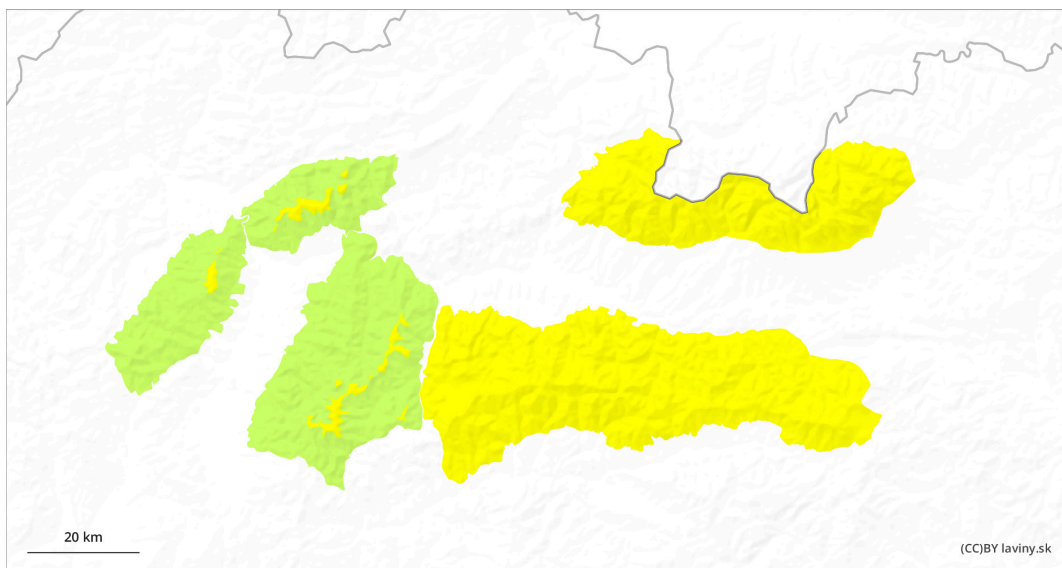


AM

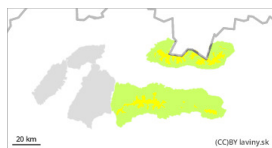


PM

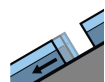


Danger Level 2 - Moderate

AM:



Tendency: Increasing avalanche danger
on Monday 19 02 2024



Gliding snow



1500m

Snowpack stability: fair

Frequency: few

Avalanche size: large

PM:



Tendency: Increasing avalanche danger
on Monday 19 02 2024



Wet snow

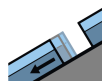


1600m

Snowpack stability: poor

Frequency: some

Avalanche size: small



Gliding snow



1500m

Snowpack stability: fair

Frequency: few

Avalanche size: large

The sunny warm weather in the afternoon results in a risk of wet avalanches.

In the High, Low and Western Tatras there is a moderate avalanche danger (2nd degree). Warm, sunny weather is expected, so the snow will soften and lose cohesion, especially in the afternoon. Southern sunny slopes will be at risk. Wet snow will be an avalanche problem. Up to 5 cm of new snow has been added at the highest altitudes, but due to its small amount it will not affect the avalanche situation. Small spontaneous avalanches may occur.

Only isolated gliding avalanches are to be expected.

Snowpack

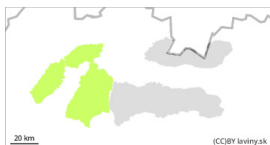
The snow cover is very varied. Warm weather with rain has caused the top layers of snow to become waterlogged. These are hardening due to the cooling. Up to 5 cm of new snow has been added above 1800 m. During the day on sunny slopes up to 1800 m the snow may soften during the day. Continuous snow cover occurs from about 1200 m above sea level.

Tendency

With increasing sunlight during the day, slightly rising.

Danger Level 2 - Moderate

AM:

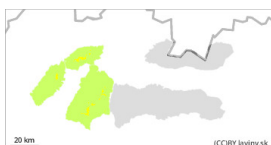


Tendency: Increasing avalanche danger 
on Monday 19 02 2024

PM:



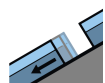
Tendency: Increasing avalanche danger 
on Monday 19 02 2024



Wet snow



Snowpack stability: fair
Frequency: some
Avalanche size: medium



Gliding snow



Snowpack stability: fair
Frequency: few
Avalanche size: large

Sunny and warm weather will cause a risk of wet avalanches in the afternoon.

In Mala and Veľká Fatra a moderate avalanche danger (2nd degree) above 1200 m a.s.l. is declared in the afternoon on sunny slopes. Due to the warm, sunny weather, the snow cover will become wet, which will reduce its cohesion. Wet avalanches will therefore be an avalanche problem. At altitudes below 1200 m, there is only incoherent snow cover, so avalanches are not expected there.

Only isolated gliding avalanches are to be expected.

Snowpack

Due to sunlight, the snow will become wet and soft on the southern slopes in the afternoon. Continuous snow cover occurs from about 1200 m above sea level.

Tendency

With increasing sunlight during the day, slightly rising.

<i> Compiled by: Pavel Krajčí </i>