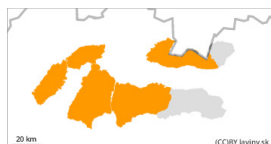


Danger Level 3 - Considerable

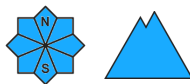


Tendency: Increasing avalanche danger ↗

on Monday 25 12 2023



New snow



Snowpack stability: poor

Frequency: some

Avalanche size: large



Wet snow



Snowpack stability: poor

Frequency: some

Avalanche size: large

New wind-driven snow and gradual warming

For the Fatras and the West of the Tatras and the Low Tatras is declared the 3rd degree of avalanche danger (increased danger) from the 5-point international scale.

In these mountain ranges, 40 to 70 cm of new snow has fallen in the forest zone, and further snowfall is forecast with gradual warming. At higher altitudes, there is less new snow, blown into leeward troughs and mounds and into the slash and forest zone.

The layers of new snow are deposited on a hard frozen surface, which is a good sliding surface. Watch for thick pillows of blown snow in easterly orientations.

Mechanical release of avalanches is likely to be possible on steep slopes with little additional loading. Moderate-sized spontaneous avalanches are likely to occur in the current warming period.

Snowpack

A warm front is advancing in the westerly flow. It will bring, in addition to more snow (with continued westerly winds), warming. During this period of snowfall, since Thursday, 40 to 70 cm of new snow has already been added in the marked area, in the forest zone. Strong north-westerly winds are transporting the new loose snow to lower elevations, into the forest and slash zone. At high altitudes, we generally record a few tens to 0 cm of new snow. The snow is unevenly distributed due to the wind. On leeward slopes, in gullies and in the mounds of mainly easterly orientations, dangerous snow pillows more than 1 m thick are formed.

Warming will reduce the strength of the new snow layers,

Tendency

With the gradual warming, the avalanche danger tends to increase slightly.

<i> Compiled by Ivan Chlebovec </i>

Danger Level 2 - Moderate



Tendency: Increasing avalanche danger
on Monday 25 12 2023



New snow



Snowpack stability: **poor**

Frequency: **some**

Avalanche size: **medium**

New wind-driven snow and gradual warming

For the East of the Tatras and Low Tatras is declared the 2nd degree of avalanche danger (increased danger) from the 5-point international scale.

Around 20 cm of new snow has fallen in these mountains, in the forest zone, and further snowfall is predicted with gradual warming. At higher altitudes, there is less new snow, blown into leeward troughs and moulds and into the slash and forest zone.

The layers of new snow are deposited on a hard frozen surface, which is a good sliding surface. Watch for pillows of blown snow in easterly orientations.

Mechanical release of avalanches is likely to be possible on very steep slopes with little additional loading. Small spontaneous avalanches are also possible in the current warming period.

Snowpack

A warm front is advancing in the westerly flow. It will bring, in addition to more snow (with continued westerly winds), warming. During this period of snowfall, since Thursday, around 20cm of new snow has been added in the marked area. Strong north-westerly winds are carrying the new loose snow to lower elevations, into the forest and slash zone. At high altitudes, we generally record a few cm of new snow. The snow is unevenly distributed due to the wind. Dangerous snow pillows are forming on leeward slopes, in gullies and moguls of predominantly easterly orientations.

Warming will reduce the strength of the new snow layers,

Tendency

With the gradual warming, the avalanche danger tends to increase slightly.

<i> Compiled by Ivan Chlebovec </i>