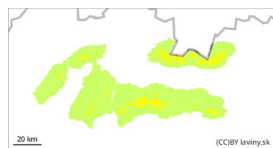


Danger Level 2 - Moderate



Tendency: Increasing avalanche danger
on Monday 11 12 2023



Wind slab



Treeline

Snowpack stability: **poor**

Frequency: **few**

Avalanche size: **medium**

Wind-wound boards on a hard to icy surface.

Avalanche danger level 2 has been declared throughout all mountain ranges. Especially the northern steep slopes are dangerous, where less stable snow slabs and pillows may be winding up and not connected to the hard ground. Such unstable formations will form on slopes of all orientations due to variable winds. Avalanche release is already possible with a small additional load, especially on slopes above 40°.

Snowpack

Dry and loose snow is found mainly in the forest zone. Above this boundary, conditions are very variable. From hard snow, through crust to snow slabs and cushions created by the wind. These are unstable on steep slopes and are not bonded to the hard ground. Light snowfall and fairly strong winds are expected over the next few days, which will further aggravate the situation.

Tendency

With the snowfall and the wind picking up.

<i> Compiled by: Martin Bešínský </i>