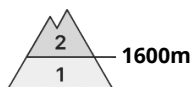
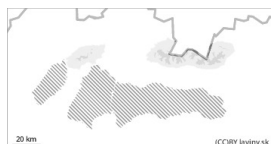




Danger Level 2 - Moderate



Tendency: Increasing avalanche danger
on Thursday 07 12 2023



New snow



Snowpack stability: **poor**

Frequency: **few**

Avalanche size: **medium**



Wind slab



Snowpack stability: **poor**

Frequency: **few**

Avalanche size: **medium**

Watch out for new snow on hard ground or wind-blown slabs.

In Mala Fatra, Western and High Tatras avalanche danger will be formed in places where new snow will fall on older hard ground or on a pre-shaped wind-rolled slab. Isolated steep slopes are dangerous, where it is possible to release an avalanche, especially with a large additional load.

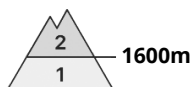
Snowpack

Snow cover is very local. There are places where the snow is blown to a hard base or, conversely, wind-blown snow slabs and pillows of varying thickness and hardness. Snowfall is expected during the day, ideally 10-15cm, which will flatten these unevennesses.

Tendency

Rising with increasing snowfall.

Danger Level 2 - Moderate



Tendency: Increasing avalanche danger
on Thursday 07 12 2023



New snow



Snowpack stability: **poor**

Frequency: **some**

Avalanche size: **medium**

Watch out for more new snow in steep couloirs.

Snow is expected to arrive during the day from the south to southwest. It will most significantly affect the Low Tatras, where in ideal conditions 15-20cm of new snow could fall on the previous hard ground with which it will not sufficiently bond. Avalanche release is possible especially in steep couloirs mainly in the northern sector. As this is new loose snow, avalanche release is possible even with a small additional load on slopes above 40°.

Snowpack

After the previous warming and subsequent cooling, a firm crust has formed over most of the area, which is locally collapsing. There is a layer of soft snow underneath which is susceptible to loosening of this crust. However, with the snowfall coming and the overlying layer of new snow coming in, this problem will not significantly affect the avalanche situation. Thus, the bigger problem will be new snow that falls on a hard base with which it does not have time to sufficiently bond.

Tendency

Rising with increasing snowfall.

Danger Level 1 - Low



Tendency: Increasing avalanche danger
on Thursday 07 12 2023



New snow



Snowpack stability: **poor**

Frequency: **few**

Avalanche size: **small**

New loose snow on hard ground.

In Veľká Fatra, Lúčanská Mala Fatra and in the Kralovohoľa part of the Low Tatras the avalanche situation is generally favourable. Steep slopes may be dangerous, where freshly fallen new snow will not be well bonded to the older hard ground.

Snowpack

After the warming and subsequent cooling, hard firn crust covers most of the area, which locally collapses. With the onset of snow, new snow coming from the south to the south-west will cover it. Ideally 15-20 cm of snow will fall.

Tendency

Rising with increasing snowfall.

Compiled by: Martin Bešínský